

Document title

DATA SHOP SFTP GUIDE

Document type or subject

GUIDE

Revision number

Revision Number: 1.2

Date

07 February 2024

This document is for information purposes only and is not a recommendation to engage in investment activities. The information and materials contained in this document are provided 'as is' and Euronext does not warrant the accuracy, adequacy or completeness of the information and materials and expressly disclaims liability for any errors or omissions. This document is not intended to be, and shall not constitute in any way a binding or legal agreement, or impose any legal obligation on Euronext. This document and any contents thereof, as well as any prior or subsequent information exchanged with Euronext in relation to the subject matter of this document, are confidential and are for the sole attention of the intended recipient. All proprietary rights and interest in or connected with this publication shall vest in Euronext. No part of it may be redistributed or reproduced without the prior written permission of Euronext.

Euronext refers to Euronext N.V. and its affiliates. Information regarding trademarks and intellectual property rights of Euronext is located at <https://www.euronext.com/terms-use>.

© 2024, Euronext N.V. – All rights reserved.

PREFACE

DOCUMENT HISTORY

The following table provides a description of all changes to this document.

VERSION NO.	DATE	CHANGE DESCRIPTION
1.0	06/08/2021	Initial version
1.1	14/12/2022	Added SFTP host/port details
1.2.	07/02/2024	Added note to SFTP host/port details section

CONTENTS

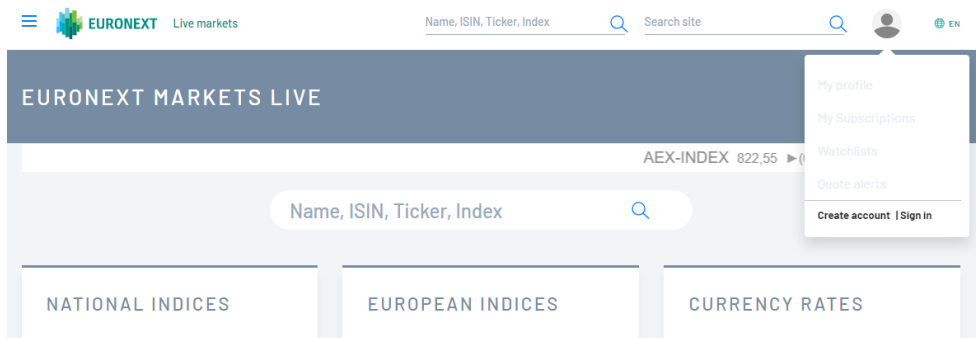
1.	STEPS TO CONFIGURE AUTHENTICATION SETTINGS.....	4
2.	STEPS TO GENERATE SSH KEY USING WINSCP	7
3.	SFTP HOST/PORT DETAILS	10

1. STEPS TO CONFIGURE AUTHENTICATION SETTINGS

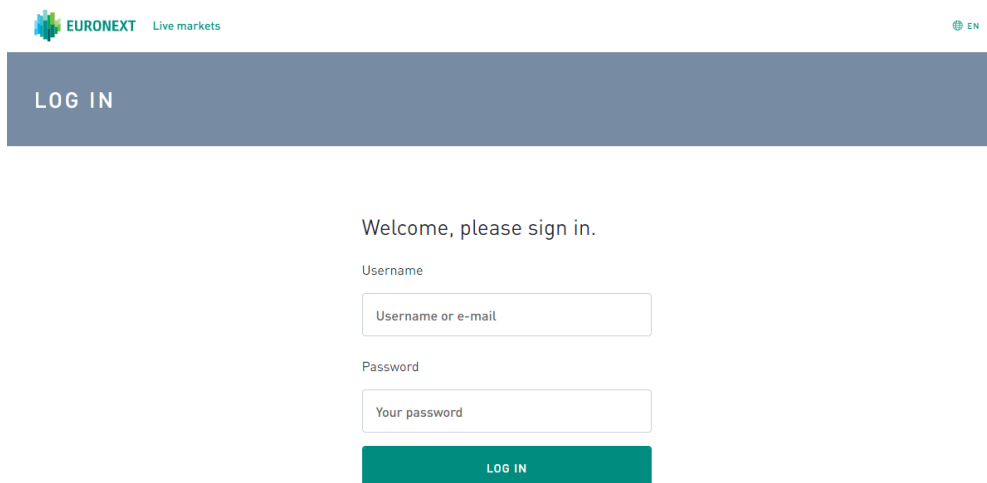
STEP 1 – SIGN IN

URL: <https://live.euronext.com/>

Press “Sign in”.

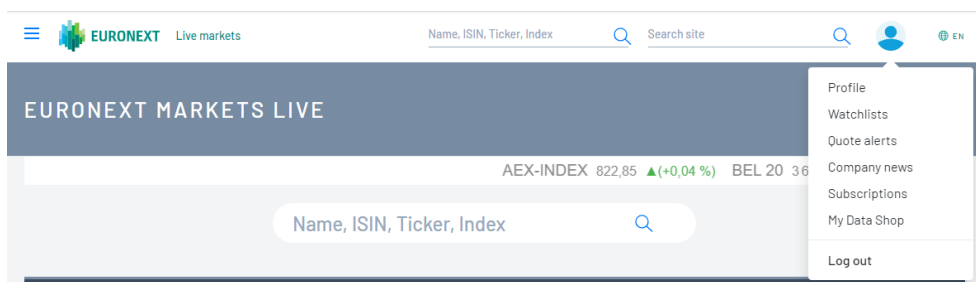


Enter your live.euronext.com “Username” and “Password”.



STEP 2 – SELECT AUTHENTICATION METHOD

Press “My Datashop Profile”.



Select your preferred “Authentication Method”.

EURONEXT

Live markets

Name, ISIN, Ticker, Index

Search site

EN

MY DATA SHOP

My SFTP Settings

My Licenses

My Files

Authentication Method

Username / Password

Username / Password

SSHKey

Username / Password + SSHKey

STEP 3 – ENTER YOUR ACCESS DETAILS

• AUTHENTICATION METHOD: “USERNAME / PASSWORD”

Your SFTP “Username” is pre-defined by Euronext. You may change it.

Enter your SFTP “Password”.

Press “Update”.

EURONEXT

Live markets

Name, ISIN, Ticker, Index

Search site

EN

Authentication Method

Username / Password

Username

your username

Password

POLICY	STATUS	CONSTRAINT
Regular base policy	Pass	1 special characters
Regular base policy	Pass	1 uppercase characters
Regular base policy	Pass	1 numeric characters
Regular base policy	Pass	Password character length of at least 8 characters
Regular base policy	Pass	Password must not contain the user's username.

Status

ACTIVE

Update

• AUTHENTICATION METHOD: “SSHKEY”

Your SFTP “Username” is pre-defined by Euronext. You may change it.

Enter your “SSHKey”.

Press “Update”.

Authentication Method

SSHKey

Username

your username

Public SSHKey

ssh-rsa AAAAB3NzaC1yc2EAAAADAQABAAQCAg4pvXrzvQbQlpEbYns8lNCxfg17LoBEp9wdvTivjk0yAfu8HRzZcZ+pu7yl

Status

ACTIVE

Update

- AUTHENTICATION METHOD: “USERNAME / PASSWORD + SSHKEY”
- Your SFTP “Username” is pre-defined by Euronext. You may change it.
- Enter your SFTP “Password”.
- Enter your “Public SSHKey”.
- Press “Update”.

Username / Password + SSHKey

Username

your username

Password

.....

POLICY	STATUS	CONSTRAINT
Regular base policy	Pass	1 special characters
Regular base policy	Pass	1 uppercase characters
Regular base policy	Pass	1 numeric characters
Regular base policy	Pass	Password character length of at least 8 characters
Regular base policy	Pass	Password must not contain the user's username.

Public SSHKey

ssh-rsa AAAAB3NzaC1yc2EAAAADAQABAAQCAg4pvXrzvQbQlpEbYns8lNCxfg17LoBEp9wdvTivjk0yAfu8HRzZcZ+pu7yl

Status

ACTIVE

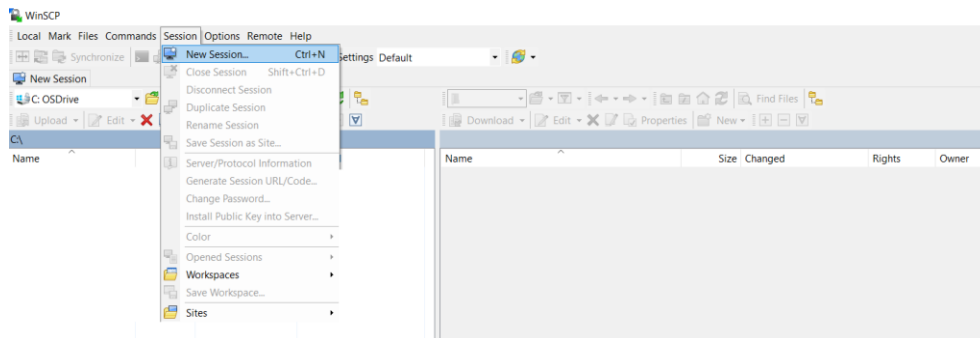
Update

2. STEPS TO GENERATE SSH KEY USING WINSCP

The WinSCP application is used for illustration purposes. The user may select any other application that supports the PuTTY format¹ to generate the SSH KEY.

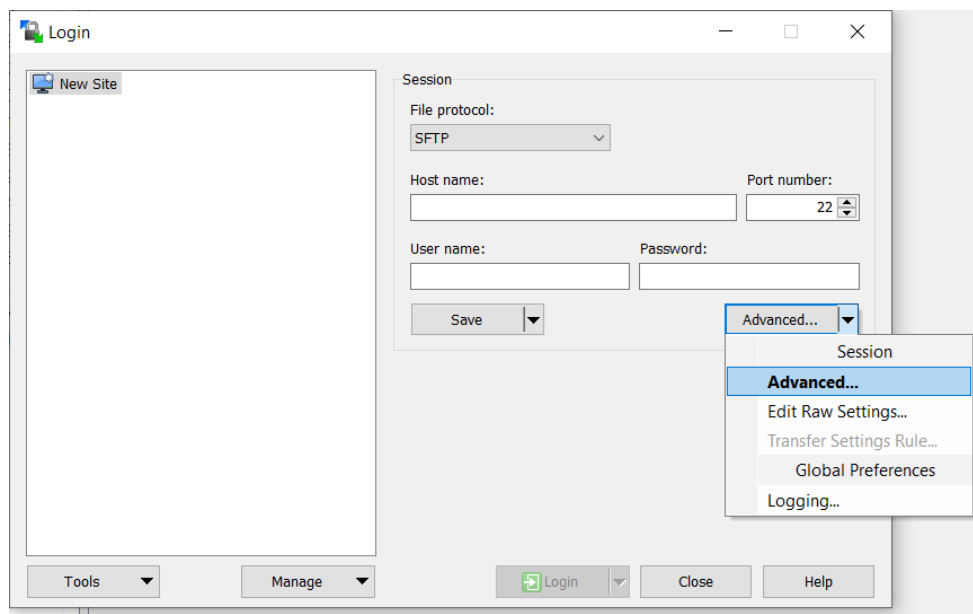
STEP 1 – OPEN “NEW SESSION”

Press “New Session” under “Session” menu



STEP 2 – OPEN “ADVANCED” SESSION SETTINGS

Press “Advanced” under the “Advanced” button on the “Login” window

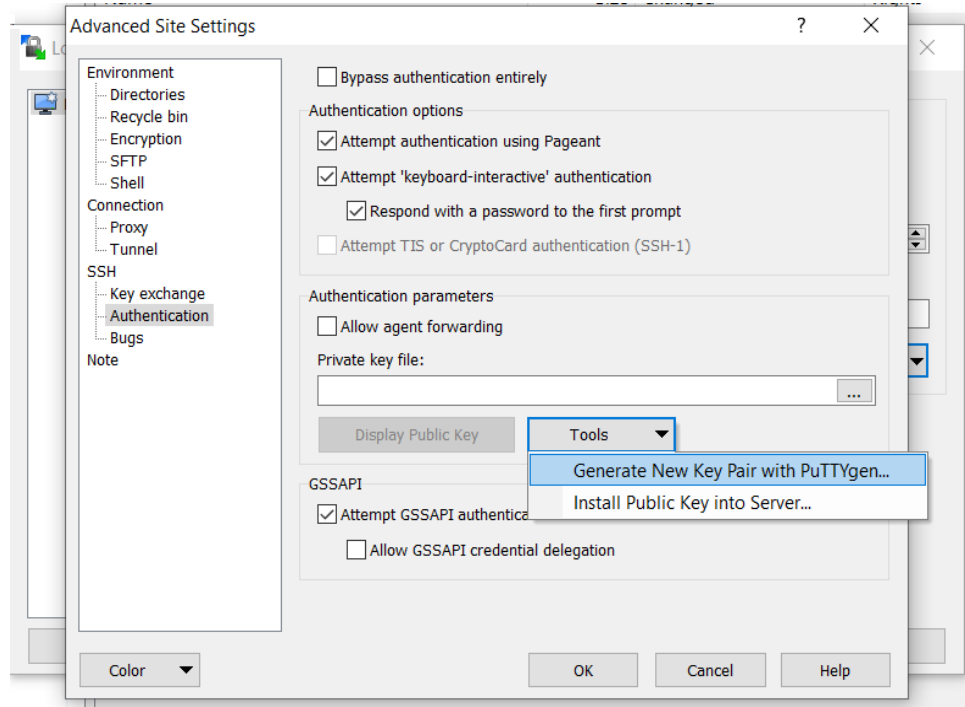


¹ PuTTY is the only key format supported by the Euronext Data Shop SFTP

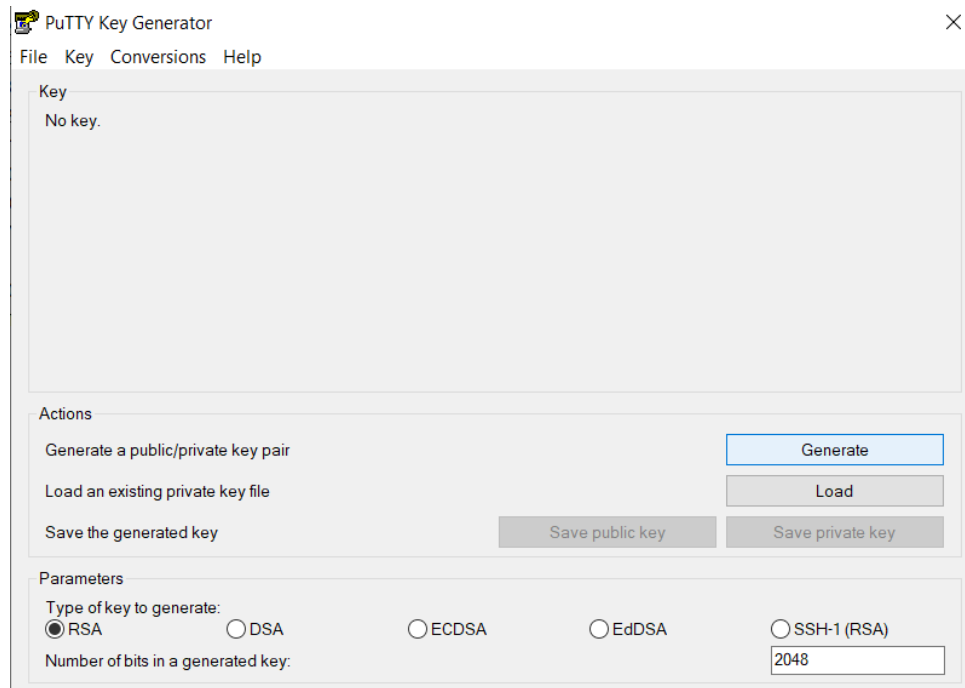
STEP 3 – GENERATE SSH KEY PAIR

Go to “Authentication” under “SSH” on the “Advanced Site Settings” window

Press “Generate New Key Pair with PuTTYgen...” button under the “Tools” button

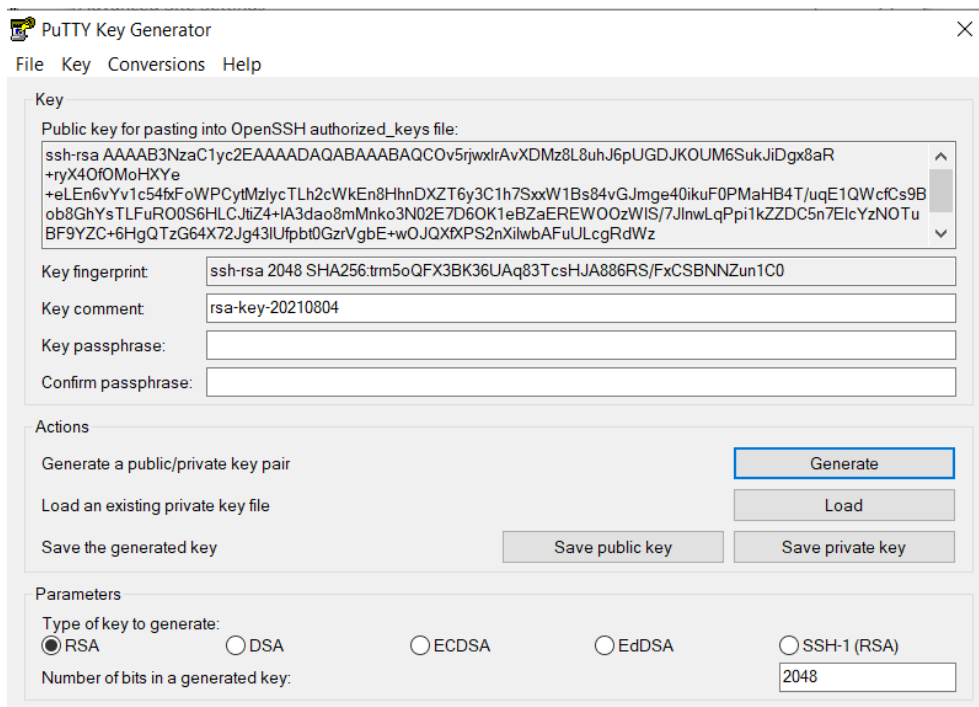


Press the “Generate” button and then follow the instructions provided by the WinSCP application.



STEP 3 – SAVE SSH KEY PAIR

Press “Save private key” and “Save public key” buttons



The image shows the PuTTY Key Generator window. The 'Key' section displays the public key for pasting into the OpenSSH authorized_keys file, the key fingerprint, and fields for a key comment, passphrase, and confirm passphrase. The 'Actions' section contains buttons for 'Generate', 'Load', 'Save public key', and 'Save private key'. The 'Parameters' section shows the type of key to generate (RSA is selected) and the number of bits in a generated key (2048).

Key

Public key for pasting into OpenSSH authorized_keys file:

```
ssh-rsa AAAAB3NzaC1yc2EAAAADAQABAAQCOv5rjwxlrAvXDMz8L8uhJ6pUGDJKOUM6SukJiDgx8aR
+ryX4OfOMoHXYe
+eLEn6vYv1c54&FoWPCytMzlycTLh2cWkEn8HhnDXZT6y3C1h7SxxW1Bs84vGJmge40ikuF0PMaHB4T/ugE1QWcfCs9B
ob8GhYsTLFuR00S6HLCJtiZ4+IA3dao8mMnko3N02E7D6OK1eBZaEREWO0zWIS/7JlnwLqPpi1kZZDC5n7EicYzNOTu
BF9YZC+6HgQTzG64X72Jg43lUfptb0GzrVgbE+wOJQXfXPS2nXilwbAFuULcgRdWz
```

Key fingerprint: ssh-rsa 2048 SHA256:trm5oQFX3BK36UAq83TcsHJA886RS/FxCSBNZun1C0

Key comment: rsa-key-20210804

Key passphrase:

Confirm passphrase:

Actions

Generate a public/private key pair **Generate**

Load an existing private key file **Load**

Save the generated key **Save public key** **Save private key**

Parameters

Type of key to generate: ☒ RSA ☐ DSA ☐ ECDSA ☐ EdDSA ☐ SSH-1 (RSA)

Number of bits in a generated key: 2048

3. SFTP HOST/PORT DETAILS

- Host: data.prodnr.euronext.cloud
- Port: 22000

NOTE: Euronext recommends clients **not to use** IP addresses to establish the connection to this server. The IP addresses are subject to changes without any type of prior notification to clients.