

Document title

DATA SHOP SFTP GUIDE

Document type or subject

GUIDE

Revision number

Revision Number: 1.3

Date

13 May 2024

This document is for information purposes only and is not a recommendation to engage in investment activities. The information and materials contained in this document are provided 'as is' and Euronext does not warrant the accuracy, adequacy or completeness of the information and materials and expressly disclaims liability for any errors or omissions. This document is not intended to be, and shall not constitute in any way a binding or legal agreement, or impose any legal obligation on Euronext. This document and any contents thereof, as well as any prior or subsequent information exchanged with Euronext in relation to the subject matter of this document, are confidential and are for the sole attention of the intended recipient. All proprietary rights and interest in or connected with this publication shall vest in Euronext. No part of it may be redistributed or reproduced without the prior written permission of Euronext.

Euronext refers to Euronext N.V. and its affiliates. Information regarding trademarks and intellectual property rights of Euronext is located at <https://www.euronext.com/terms-use>.

© 2024, Euronext N.V. – All rights reserved.

PREFACE

DOCUMENT HISTORY

The following table provides a description of all changes to this document.

| VERSION NO. | DATE | CHANGE DESCRIPTION |
|-------------|------------|--|
| 1.0 | 06/08/2021 | Initial version |
| 1.1 | 14/12/2022 | Added SFTP host/port details |
| 1.2. | 07/02/2024 | Added note to SFTP host/port details section |
| 1.3. | 07/05/2024 | Effective 08 July 2024 , several cryptographic algorithms will no longer be supported (see section 4) |

CONTENTS

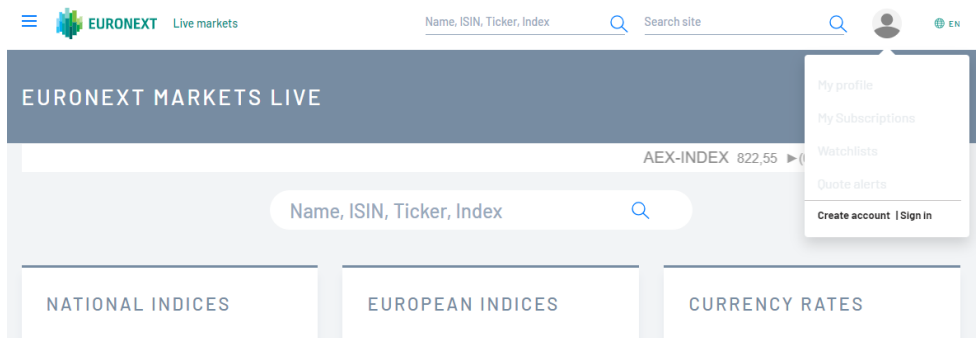
- 1. STEPS TO CONFIGURE AUTHENTICATION SETTINGS..... 4**
- 2. STEPS TO GENERATE SSH KEY USING WINSCP 7**
- 3. SFTP HOST/PORT DETAILS 10**
- 4. CRYPTOGRAPHIC ALGORITHMS 11**

1. STEPS TO CONFIGURE AUTHENTICATION SETTINGS

STEP 1 – SIGN IN

URL: <https://live.euronext.com/>

Press “Sign in”.



Enter your live.euronext.com “Username” and “Password”.



Welcome, please sign in.

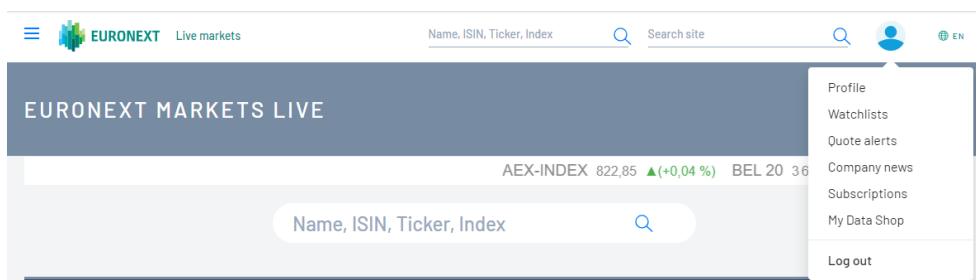
Username

Password

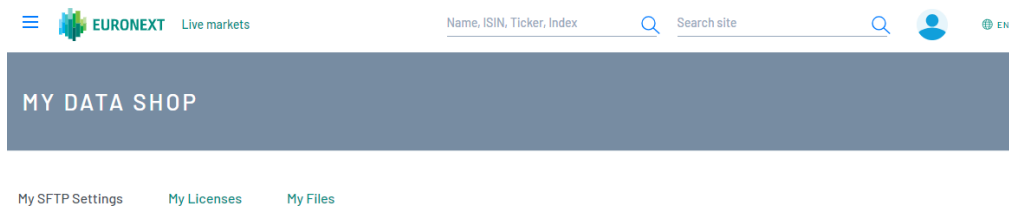
LOG IN

STEP 2 – SELECT AUTHENTICATION METHOD

Press “My Datashop Profile”.



Select your preferred “Authentication Method”.



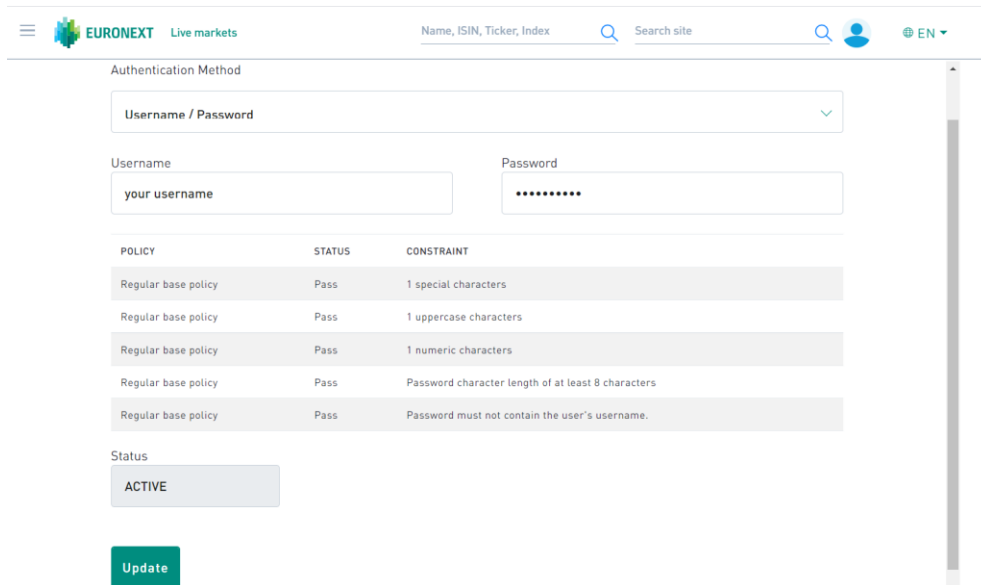
STEP 3 – ENTER YOUR ACCESS DETAILS

- **AUTHENTICATION METHOD: “USERNAME / PASSWORD”**

Your SFTP “Username” is pre-defined by Euronext. You may change it.

Enter your SFTP “Password”.

Press “Update”.



- **AUTHENTICATION METHOD: “SSHKEY”**

Your SFTP “Username” is pre-defined by Euronext. You may change it.

Enter your “SSHKey”.

Press “Update”.

Authentication Method

SSHKey

Username

your username

Public SSHKey

ssh-rsa AAAAB3NzaC1yc2EAAAADAQABAAQCAg4pvXrzvQbQlpEbYns8INCx17LoBEp9wdvTivjk0yAfu8HRzZcZ+pu7yl

Status

ACTIVE

Update

- AUTHENTICATION METHOD: "USERNAME / PASSWORD + SSHKEY"**

Your SFTP "Username" is pre-defined by Euronext. You may change it.

Enter your SFTP "Password".

Enter your "Public SSHKey".

Press "Update".

Username / Password + SSHKey

Username

your username

Password

.....

| POLICY | STATUS | CONSTRAINT |
|---------------------|--------|--|
| Regular base policy | Pass | 1 special characters |
| Regular base policy | Pass | 1 uppercase characters |
| Regular base policy | Pass | 1 numeric characters |
| Regular base policy | Pass | Password character length of at least 8 characters |
| Regular base policy | Pass | Password must not contain the user's username. |

Public SSHKey

ssh-rsa AAAAB3NzaC1yc2EAAAADAQABAAQCAg4pvXrzvQbQlpEbYns8INCx17LoBEp9wdvTivjk0yAfu8HRzZcZ+pu7yl

Status

ACTIVE

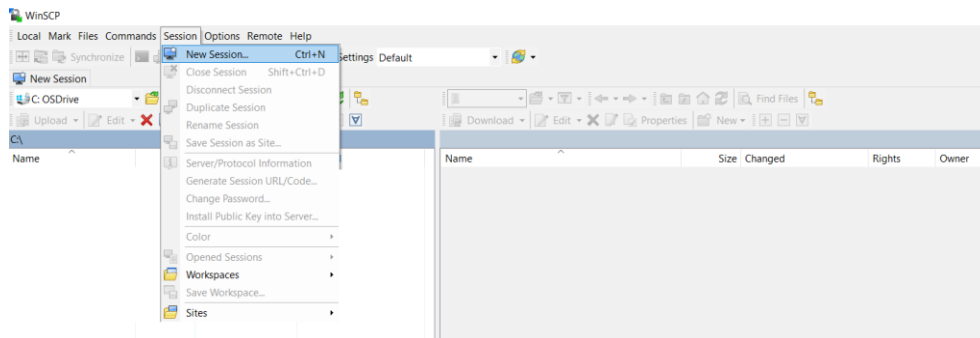
Update

2. STEPS TO GENERATE SSH KEY USING WINSCP

The WinSCP application is used for illustration purposes. The user may select any other application that supports the PuTTY format¹ to generate the SSH KEY.

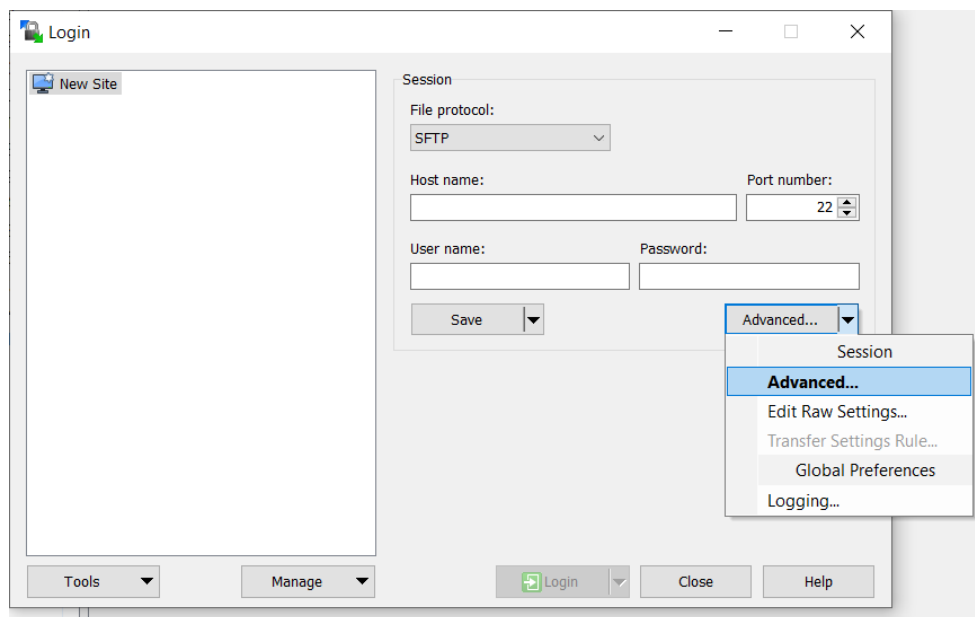
STEP 1 – OPEN “NEW SESSION”

Press “New Session” under “Session” menu



STEP 2 – OPEN “ADVANCED” SESSION SETTINGS

Press “Advanced” under the “Advanced” button on the “Login” window

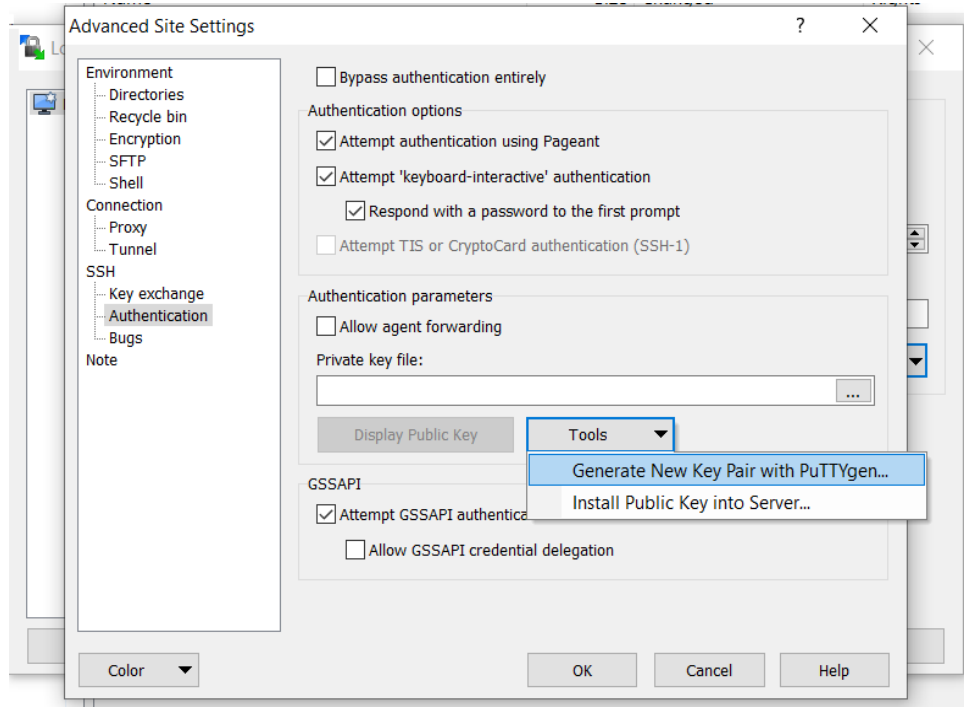


¹ PuTTY is the only key format supported by the Euronext Data Shop SFTP

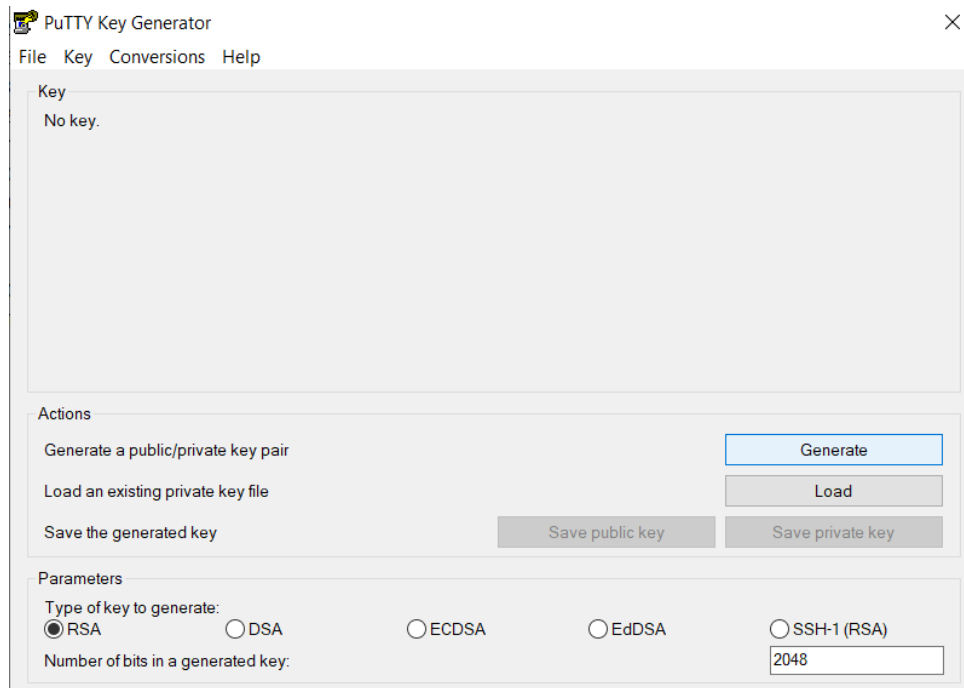
STEP 3 – GENERATE SSH KEY PAIR

Go to “Authentication” under “SSH” on the “Advanced Site Settings” window

Press “Generate New Key Pair with PuTTYgen...” button under the “Tools” button

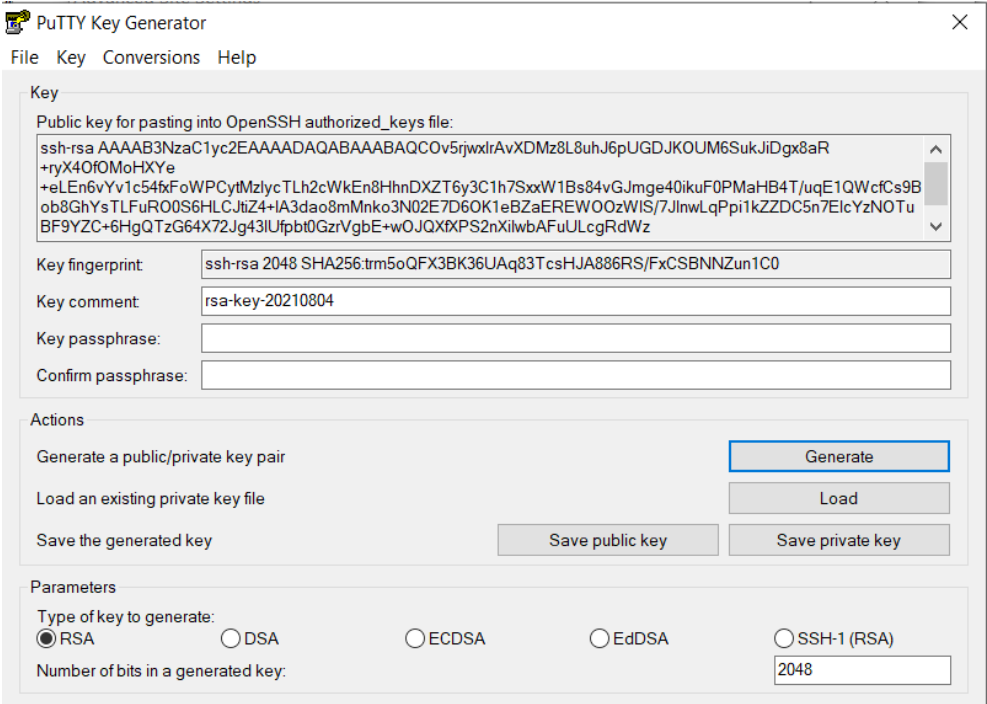


Press the “Generate” button and then follow the instructions provided by the WinSCP application.



STEP 3 – SAVE SSH KEY PAIR

Press “Save private key” and “Save public key” buttons



3. SFTP HOST/PORT DETAILS

- Host: data.prodnr.euronext.cloud
- Port: 22000

NOTE: Euronext recommends clients **not to use** IP addresses to establish the connection to this server. The IP addresses are subject to changes without any type of prior notification to clients.

4. CRYPTOGRAPHIC ALGORITHMS

Effective 08 July 2024

Supported cryptographic algorithms

| |
|--|
| SshCiphers |
| aes128-ctr |
| aes128-gcm@openssh.com |
| aes192-ctr |
| aes256-ctr |
| aes256-gcm@openssh.com |
| chacha20-poly1305@openssh.com |
| SshKexs |
| diffie-hellman-group14-sha256 |
| diffie-hellman-group16-sha512 |
| diffie-hellman-group18-sha512 |
| diffie-hellman-group-exchange-sha256 |
| ecdh-sha2-nistp256 |
| ecdh-sha2-nistp384 |
| ecdh-sha2-nistp521 |
| SshMacs |
| hmac-sha2-256 |
| hmac-sha2-256-etm@openssh.com |
| hmac-sha2-512 |
| hmac-sha2-512-etm@openssh.com |
| umac-128-etm@openssh.com |
| umac-128@openssh.com |

Not supported cryptographic algorithms

- [aes128-cbc](#)
- [aes192-cbc](#)
- [aes256-cbc](#)
- [diffie-hellman-group17-sha512](#)
- [diffie-hellman-group15-sha512](#)
- [hmac-sha1](#)
- [hmac-sha1-etm@openssh.com](#)