



EURONEXT REPORTING GUIDELINES

MYMARKETDATA PORTAL

Version number

1.7

Number of pages

70

This document is for information purposes only and is not a recommendation to engage in investment activities. This document is provided "as is" without representation or warranty of any kind. Whilst all reasonable care has been taken to ensure the accuracy of the content, Euronext does not guarantee its accuracy or completeness. Euronext will not be held liable for any loss or damages of any nature ensuing from using, trusting or acting on information provided. No information set out or referred to in this document shall form the basis of any contract. The creation of rights and obligations in respect of financial products that are traded on the exchanges operated by Euronext's subsidiaries shall depend solely on the applicable rules of the market operator. All proprietary rights and interest in or connected with this publication shall vest in Euronext. No part of it may be redistributed or reproduced in any form without the prior written permission of Euronext.

Euronext refers to Euronext N.V. and its affiliates. Information regarding trademarks and intellectual property rights of Euronext is located at www.euronext.com/terms-use.

© 2024, Euronext N.V. - All rights reserved.

These guidelines provide the Contracting Party and/or its Affiliates with more detailed information on how to fulfil their market data reporting obligations to Euronext, as described in the EMDA Reporting Policy, as per 1 January 2024. This EMDA Reporting Policy, which forms part of the Euronext Market Data Agreement (EMDA) and other documentation are available [here](#). For more information, please e-mail databyeuronext@euronext.com.

Note, the information and materials contained in this document are provided 'as is' and Euronext does not warrant the accuracy, adequacy or completeness of the information and materials and expressly disclaims liability for any errors or omissions. This document is not intended to be, and shall not constitute in any way a binding or legal agreement, or impose any legal obligation on Euronext.

CONTENTS

- 1. INTRODUCTION TO THE REPORTING REQUIREMENT 4**
- 2. MONTHLY REPORTS 5**
 - 2.1 Web Portal 5
 - 2.2 What to Report 5
 - 2.3 Unit of Count 5
 - 2.4 When to Report 5
 - 2.5 How to Report 6
- 3. EURONEXT’S MYMARKETDATA PORTAL 7**
 - 3.1 Accessing the Portal 7
 - 3.2 Multi-Factor Authentication 8
 - 3.3 The Home Page 9
- 4. USAGE REPORTING – MANUALLY 11**
 - 4.1 Creating a Location 11
 - 4.2 Editing a Location 13
 - 4.3 Inactivating a Location 14
 - 4.4 Reporting the Usage 15
 - 4.5 Submitting a Report 16
- 5. USAGE REPORTING – EXCEL UPLOAD 19**
 - 5.1 Creating a Location 19
 - 5.2 Request a Prefilled Template 19
 - 5.3 Format of the Excel Upload 20
 - 5.4 Upload an Excel Report 23
- APPENDIX 1: OVERVIEW OF THE REPORTING CATEGORIES 25**
- APPENDIX 2: UNIT OF COUNTS 27**
 - A2.1. Device 27
 - A2.2. User per Source 27
 - A2.3. Example ‘User per Source’ - when you are a Redistributor 28
 - A2.4. Example ‘User per Source’ - when you are a Trading Member 29
- APPENDIX 3: EURONEXT MARKET DATA PRODUCTS & PRODUCTS CODES (REDISTRIBUTOR) 30**
- APPENDIX 4: EURONEXT MARKET DATA PRODUCTS & PRODUCTS CODES (TRADING MEMBER) 45**
- APPENDIX 5: ADDITIONAL EXPLANATION REGARDING THE EMDA REPORTING POLICY 70**

1. INTRODUCTION TO THE REPORTING REQUIREMENT

The EMDA Reporting Policy, which forms part of the EMDA, sets out the Contracting Party's reporting obligation for

- its internal use of information.
- its redistribution of information to its subscribers that have been approved for natural user.
- its redistribution of information as part of managed non-display services.
- its redistribution of real-time data as part of an ASP Service or ESP Service to trading members.
- its redistribution of real-time data to non-professional subscribers.
- its redistribution of information as part of White Label Services.
- its redistribution of information to its subscribers and/or sub vendors

The table below provide an overview of your reporting and declaration obligations as a Contracting Party.

MONTHLY REPORTS – EMDA Reporting Policy	
WHAT	A monthly electronic report, indicating all use and redistribution of information during the reporting period as according to the EMDA Reporting Policy.
WHEN	Each month, within 15 days after the end of each calendar month.
FREQUENCY	Monthly
REPORTABLE UNIT/UNIT OF COUNT	Please refer to the EMDA Reporting Policy indicating the Unit of Count for each type of use and/or redistribution of information
FEES	The applicable monthly fees are outlined in the Product Fee Schedule available here .
HOW	Monthly electronic reports should be submitted via Euronext's <i>MyMarketData Portal</i> or alternatively via FTP in VRXML format.

2. MONTHLY REPORTS

This section provides more detailed information on how to fulfil your reporting obligation to Euronext as described in the EMDA Reporting Policy, which forms part of the EMDA.

2.1 WEB PORTAL

When your organization enters into the EMDA and access to the information commences:

- Euronext will set-up an account for you to allow you to report electronically. Log-in details will be provided to you by e-mail.
- Euronext will set-up the appropriate information products and corresponding product codes under that account.

You will then be able to complete and submit electronic reports under an account set-up by Euronext. Please do not forget to confirm the details entered prior to submitting a report to Euronext.

2.2 WHAT TO REPORT

You should report all use and redistribution of information during the reporting period as according to the EMDA Reporting Policy by completing and submitting a monthly electronic report. For this purpose, you should count and report the number of reportable units per **Euronext Information Product** within a calendar month, per location/subscriber.

2.3 UNIT OF COUNT

For your organization's own accesses, you should report the number of Users per Source with the ability to access real-time data. 'User' refers to a natural person and 'Source' refers to each separate data feed product from an Information Supplier. Netting between different sources is not permitted. For more information about the User per Source unit of count please [click here](#). Where you cannot allocate a device or application to a natural person you should report the device or application. Note, simultaneous access on such device is not permitted.

For your subscriber's accesses to Information Supplier-Controlled information you should report each Device.

For your subscriber's accesses to Recipient-Controlled market data you should report the information provided by such subscriber via a data feed access declaration.

For more information, please refer to the EMDA Reporting Policy indicating the Unit of Count for each type of use and/or redistribution of information.

2.4 WHEN TO REPORT

You have to complete and submit a monthly electronic report. Your initial report should be submitted within 15 days after the calendar month in which your organization's access to information commences. Subsequently you should report each calendar

month within 15 days after a reporting period. The table below uses the year 2023 as an example to illustrate the reporting deadlines. The same day and month will apply for the years following.

SUBMIT THE REPORT OF...	BEFORE... (I.E. REPORTING DEADLINE)	SUBMIT THE REPORT OF...	BEFORE... (I.E. REPORTING DEADLINE)
January 2024	16 February 2024	July 2024	16 August 2024
February 2024	16 March 2024	August 2024	16 September 2024
March 2024	16 April 2024	September 2024	16 October 2024
April 2024	16 May 2024	October 2024	16 November 2024
May 2024	16 June 2024	November 2024	16 December 2024
June 2024	16 July 2024	December 2024	16 January 2025

As a delay in your reporting can cause a disruption of Euronext's standard processes, Euronext may charge for compensation if you do not submit your report before the reporting deadline. For more information we refer to clause 3.3 of the EMDA Reporting Policy.

2.5 HOW TO REPORT

You can report via Euronext's *MyMarketData Portal*. You can enter data into the *MyMarketData Portal* via the graphic user interface or via an excel file upload.

You can manually report for each Location for each Information Product through the *MyMarketData Portal* and/or report via an excel upload your:

- Internal distribution and use (including your operational use)
- Subscriber's access
- Sub vendor's access
- Subscriber's access that are approved to report natural user
- Provision of managed non-display services
- Provision of ASP services /ESP services to trading members
- Provision of White Label Services
- Non-professional subscribers
- Page views

3. EURONEXT'S MYMARKETDATA PORTAL

This section describes how to access Euronext's *MyMarketData Portal* and how the home page' functionalities works.

3.1 ACCESSING THE PORTAL

Euronext's *MyMarketData Portal* is available at <https://mymarketdata.euronext.com>. Your email address will be the UserID and once Euronext has set you up for reporting a link to create your own password will be sent to your email address.



The Euronext MyMarketData Portal is available for Colocation, Connectivity, Wireless Services and Market Data clients to manage their agreement details. Market Data clients can also order new products and report their usage via MyMarketData.

A screenshot of the "Sign In" form. It has a blue header with the text "Sign In". Below the header are two input fields: "Enter Email Address ..." and "Enter Password ...". There is a blue link "Forgot Password" to the left of a green "Sign In" button. Below the button are two more blue links: "New Client? Register here" and "Download Privacy Statement".

If you forget your password, click '*Forgot Password*' to receive a new one.

A screenshot of the "Forgot Password" form. It has a blue header with the text "Forgot Password". Below the header is an input field labeled "Email Address" with the placeholder text "Enter Email Address ...". At the bottom are two buttons: a white "Cancel" button and a green "Request" button.

If you do not yet have access to Euronext's *MyMarketData Portal*, please send an e-mail to databyeuronext@euronext.com.

3.2 MULTI-FACTOR AUTHENTICATION

Once you sign in the first time on the Euronext *MyMarketData* Portal, the Multi-Factor Authentication (MFA) will be activated. You will be directed to the following page:

A screenshot of a web page titled "Select Two Factor Authentication". At the top, there is a blue header with the title. Below it is a light blue box containing an information icon and the text "Please select the preferred multi-factor authentication method." Below this is a white drop-down menu with "Authenticator App" selected. At the bottom of the form is a teal button labeled "Select Authentication Method".

Through the drop-down menu, you can choose to use either the MFA via Authenticator App or E-mail.

MFA via E-mail

If you select the authentication via e-mail, you will be sent a 6-digit code that you will receive in the e-mail with which you are logged in the *MyMarketData Portal*.

MFA via Authenticator App

If you select the authentication via app, download an Authenticator App ('Google Authenticator' or 'Microsoft Authenticator') to your phone from the App Store or Google Play Store.

A screenshot of a web page titled "Set up Two Factor Authentication". At the top, there is a blue header with the title. Below it is a light blue box containing an information icon and instructions: "Open your Authenticator app and add a new account. Scan the QR Code or manually enter the setup code. Enter the validation code from your Authenticator app. Click to Turn on Two Factor Authentication". Below this is a large QR code. Underneath the QR code is a white input field with the placeholder text "Enter the validation code". At the bottom of the form is a teal button labeled "Turn on Two Factor Authentication".

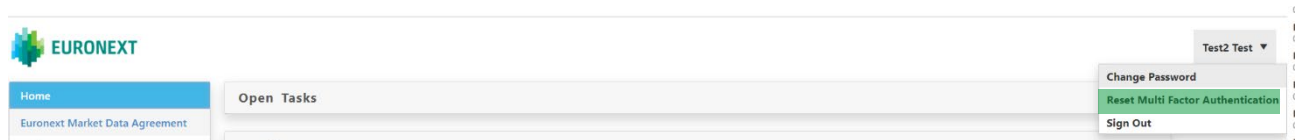
The *MyMarketData Portal* will display your unique QR code once you log in to your account.

Launch your Authenticator App as directed on the screen and scan the QR Code. The App will register your Account promptly. Then, enter the 6-digit code displayed on the Authenticator App.

Once the MFA via App is installed, you must enter the six digits displayed in the app each time you log into the Portal.

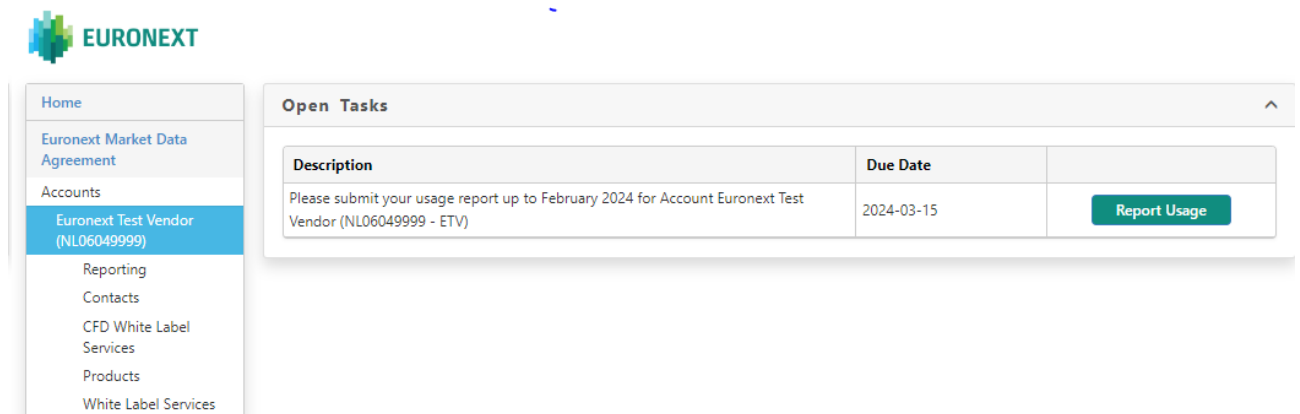
After selecting your preferred Multi-Factor Authentication method, the *MyMarketData Portal* will automatically prompt you to use the selected MFA method each time you log in.

If you want to change your MFA method, log in to your *MyMarketData* account and reset your selection in the top-left corner of the window. Clicking '**Reset Multi Factor Authentication**' will redirect you to a window where you can choose a different MFA method.



3.3 THE HOME PAGE

The *MyMarketData Portal* home page shows an overview of '**Open Tasks**'. The pending reporting tasks (one for each account) will be visible. Via the '**Report Usage**' button, each task leads to the relevant *Account* page.



On the left side you will find a menu showing the agreement(s) and account(s) you have access to. The menu has multiple levels, the highest level shows the different agreements your company has with Euronext Market Data, the lower levels show the accounts for reporting and billing and the associated data.

When selecting an agreement in the menu, the details of the agreement will be displayed in the main content section of the page, and this also opens the sub menu with the account(s).

By selecting the account, the details of the account will be displayed.

Here you will also find the **'Report Online'** button that gives access to the *Usage Reporting* page, and the dates and status the last time a report was successfully validated, the last month that has been reported, the last time a report was submitted, and the status of the last report.

Please note that your session will time out after 20 minutes of inactivity, unless you are on a *Usage Reporting* page, in which case the session time-out will be 24 hours to prevent you from losing your work.

In the right top corner, you will find a dropdown menu showing your user account details, with the options to change password, reset MFA or sign out.

4. USAGE REPORTING – MANUALLY

This section describes how to create your report via the graphic user interface in the *MyMarketData Portal*.

To go to the *Usage Reporting* page, click on **'Report Online'** button on the *Account* page. This will open the *Usage Reporting* page with the current reportable inventory of that account.

The screenshot displays the 'Usage reporting for account NL06049999' page. At the top, it shows the last month reported as December 2023, with the last date submitted being 2024-01-10. The address is listed as Beursplein 5, 1012 JW Amsterdam, Netherlands. Below this is a table of reportable units. The table has columns for Location, Location Name, Product Code, Product Description, and monthly counts for Dec 23, Jan 24, and Feb 24. Each row includes an 'Accept' button. The first row is highlighted in blue and shows location ETV-987321 for Less Noobish Trading, reporting 1 unit for each month. Other rows include various locations like ETV-AHF, ETV-BAR01, ETV-BM001, ETV-BM13, ETV-LOGIC, ETV-Logic, ETV-MOMIR, ETV-Momir, and ETV-TEST99099.

Note, you should report the number of reportable units with the ability to access a particular Euronext information product under a unique Location Account Number in accordance with the EMDA Reporting Policy.

4.1 CREATING A LOCATION

To create a new Location, you should use the **'Create Location'** button. This opens a pop up with three tabs.

The 'Create Location' pop-up form has three tabs: 'Location', 'Contact', and 'Product'. The 'Location' tab is selected. It contains the following fields: ID (with a dropdown menu showing 'ETV'), Name (required, 'Enter Name ...'), Country (required, 'Select Country ...'), City (required, 'Enter City ...'), Zip code ('Enter Zip code ...'), Address 1 (required, 'Enter Address 1 ...'), Address 2 ('Enter Address 2 ...'), and State ('Enter State ...'). At the bottom, there are 'Cancel' and 'Save' buttons.

In the '**Location**' tab, please fill in the fields as requested. Please note the red fields are mandatory.

- '**Location ID**' field: assign a unique identifier by which you can identify the Location (Location Account Number).
- '**Name**' field: the name field should always be the statutory name of the applicable organizational entity (i.e. if the organizational entity's statutory name is 'ABCD Ltd.' Please include that in full and not just 'ABCD') (Location Account Name).

The Location details (i.e. name, address, city, etcetera) should be that of:

- the contracting party and/or its affiliates (internal distribution and use)
- the subscribers (subscriber access)
- the sub vendors (redistributor access)
- the trading members (the organizational entity of the Member's group, per country i.e. member access)

In the '**Contact**' tab, please fill in the contact details of the Location.

IMPORTANT: even though *MyMarketData Portal* does not indicate the contact detail fields as required fields, Euronext recommends that you provide up-to-date contact details for each Location.

	Product Code	Vendor Code	Product Description ↑	Delivery Type
<input checked="" type="checkbox"/>	EAI-SA		Euronext All Indices - Display (SA)	
<input checked="" type="checkbox"/>	COMD-SA		Euronext Commodity Derivatives Level 2 - Display (SA)	
<input type="checkbox"/>	ECLP-SA		Euronext Continental Cash Last Price - Display (SA)	
<input type="checkbox"/>	EQID-IU		Euronext Equity and Index Derivatives Level 2 - Internal Use	
<input type="checkbox"/>	MAML1-SA		Euronext Milan All Markets Level 1 - Display (SA)	
<input type="checkbox"/>	MNPL2-SA		Euronext Milan Non-Professional Level 2	
<input type="checkbox"/>	ENPIB-SA		Non-Professional Basic	
<input type="checkbox"/>	ENPI-SA	ENPI-AW	Non-Professional Premium	

In the '**Products**' tab, please select at least one or more of the products that you need to report for your Location.

After you have filled in the fields in all the three tabs, you can click the '**Save**' button.

If a product is missing in the 'Products' tab please contact databyeuronext@euronext.com. For more information about Euronext Market Data Product(s) please [click here](#).

4.2 EDITING A LOCATION

When you want to edit an existing Location click on the '**Edit Location**' button. This will open the '**Edit Location**' pop up for the Location that was selected on the *Usage Reporting* page.

Usage reporting for account NL06049999						
Last Month Reported		July 2019				
Last Date Submitted		8/29/2019				
<input type="button" value="+ Create Location"/> <input checked="" type="button" value="Edit Location"/> <input type="button" value="- Inactivate Location"/>						
Location	Location Name	Product Code	Product Description	Jul 19	Aug 19	Accept All / Reset All
ETV-001	Test	ECB10-DF	Euronext Continental Cash Level 2 - Displa...	1	1	Accept
ETV-BANK2018	Bank 2018	ECB10-DF	Euronext Continental Cash Level 2 - Displa...	1	1	Accept

In this example we use *ETV-001*.

Edit Location ✕

ETV-001 ▼

Location

Contact

Product

ID

ETV-

-

001

Name *

Country *

United Kingdom
▼

City *

Zip code

Address 1 *

Address 2

State

Please note that in the '**Edit Location**' pop up there is a pulldown menu where you can select a different Location if needed. Once the Location you want to edit is displayed, you can then edit the relevant information on the relevant tabs (Location, Contact, Products) of the '**Edit Location**' pop up.

Please note that any edits need to be saved by clicking **'Save'** before they are applied. You cannot deselect products that are already present in the inventory and shown on the *Usage Reporting* page.

4.3 INACTIVATING A LOCATION

You can inactivate a Location via the **'Inactivate Location'** button on the *Usage Reporting* page.

Usage reporting for account NL06049999								
Last Month Reported		September 2021						
Last Date Submitted		2021-10-01						
+ Create Location Edit Location - Inactivate Location Export to Excel More months								
Location ↑	Location Name	Product Code	Product Description	Sep 21	Oct 21	Nov 21	Accept All	Reset All
ETV-abc	ABC BV	EAI-SA	Euronext All Indices - Display (SA)	1	1	1	Accept	
ETV-ABC	ABC BV	EAI-SA	Euronext All Indices - Display (SA)	2	2	2	Accept	
ETV-BM001	Banca Martina	EAI-SA	Euronext All Indices - Display (SA)	5	5	5	Accept	
ETV-BM001	Banca Martina	ECLP-SA	Euronext Continental Cash Last Price - Disp...	1	1	1	Accept	

Select the Location that you want to inactivate and click **'Inactivate Location'**. You will get the following pop up.

When you can click **'Yes'**, the complete inventory (all products) of the Location will be set to zero in the actual month of reporting.

4.4 REPORTING THE USAGE

Once a Location has been created you can add inventory (number of reportable units) under said Location. On the *Usage Reporting* page, you see the current reportable inventory of Locations for an account.

For each Location you should report the total number of reportable units with the ability to access Euronext Information per Euronext information product during a calendar month.

On the Usage Reporting page, you can select per line for each Location per the relevant Euronext information product(s) and enter the total number for the calendar month. The *MyMarketData Portal* will prefill the number fields according to the last received and validated report. In this example we report the number for *Jan 2024*.

Usage reporting for account NL06049999

Last Month Reported: December 2023
 Last Date Submitted: 2024-03-18
 Address: Beursplein 5, 1012 JW Amsterdam, Netherlands

Your changes will not be saved until all rows have been accepted and the Report has been submitted.

+ Create Location | Edit Location | Inactivate Location | Export to Excel | More Months

Location	Location Name	Product Code	Product Description	Dec 23	Jan 24	Feb 24	Accept All	Reset All
ETV-987321	Less Noobish Trading	EAI-SA	Euronext All Indices - Display (SA)	1	1	1	Accept	
ETV-AHF	Alessandro Hedge Fund	ECLP-SA	Euronext Continental Cash Last Price - Disp...	1	1	1	Accept	
ETV-BAR01	Barclays	COMD-SA	Euronext Commodity Derivatives Level 2 - ...	1	1	1	Accept	
ETV-BM001	Banca Martina	EQID-IU	Euronext Equity and Index Derivatives Level...	3	3	3	Accept	
ETV-BM001	Banca Martina	EAI-SA	Euronext All Indices - Display (SA)	1	1	1	Accept	
ETV-BM001	Banca Martina	ECLP-SA	Euronext Continental Cash Last Price - Disp...	2	2	2	Accept	
ETV-BM001	Banca Martina	COMD-SA	Euronext Commodity Derivatives Level 2 - ...	1	1	1	Accept	
ETV-BM13	Dixie Bank - new	ENPIB-SA	Non-Professional Basic	3	3	3	Accept	
ETV-LOGIC	TEST LOGIC	EAI-SA	Euronext All Indices - Display (SA)	1	1	1	Accept	
ETV-Logic	TEST LOGIC	EAI-SA	Euronext All Indices - Display (SA)	1	1	1	Accept	
ETV-MOMIR	Momir Bank	EAI-SA	Euronext All Indices - Display (SA)	1	1	1	Accept	
ETV-Momir	Momir Bank	EAI-SA	Euronext All Indices - Display (SA)	1	1	1	Accept	
ETV-TEST99099	Anny F Investments	COMD-SA	Euronext Commodity Derivatives Level 2 - ...	2	2	2	Accept	
ETV-TESTDAG	Novo Dagbank	ENPI-SA	Non-Professional Premium	3	3	3	Accept	
ETV-TESTDAG	Novo Dagbank	EAI-SA	Euronext All Indices - Display (SA)	1	1	1	Accept	
ETV-Testdag	Novo Dagbank	ECLP-SA	Euronext Continental Cash Last Price - Disp...	1	1	1	Accept	

Submit Report

If you want to adjust the number of the Euronext information product for a Location, you can enter that straight in the number field of the calendar month itself.

The **'Reset'** button will reset the number you entered to the original value as reported for the Location and Product during you last report.

If you want to undo the changes of all the numbers that you have entered, you can use the **'Reset All'** button. You will get the following pop up.

✕

?
Are you sure you want to reset all lines?

Yes
No

You can click **'Yes'**, and all changes made will be undone to the number of Euronext information products of those Locations.

If you want to adjust the reported numbers of retro-active months, you can click the **'More months'** button and the retro-active months will be shown on the *Usage Reporting Page*.

4.5 SUBMITTING A REPORT

Before being able to submit a report, all lines on the *Usage Reporting* page must be accepted. You can accept single lines via the **'Accept'** button or use the **'Accept All'** button to accept all lines simultaneously.

Usage reporting for account NL06049999

Last Month Reported: December 2023
 Last Date Submitted: 2024-03-18
 Address: Beursplein 5, 1012 JW Amsterdam, Netherlands

Your changes will not be saved until all rows have been accepted and the Report has been submitted.

Location	Location Name	Product Code	Product Description	Aug 23	Sep 23	Oct 23	Nov 23	Dec 23	Jan 24	Feb 24	Accept All	Reset All
ETV-101010	Banca Sella demo	EAI-SA	Euronext All Indices - Display (SA)	1	0	0					Reset	
ETV-123456789	Precious Investment	EAI-SA	Euronext All Indices - Display (SA)	5	5	0	0	0			Reset	
ETV-987321	Less Noobish Trading	EAI-SA	Euronext All Indices - Display (SA)	1	1	1	1	1	1	50	Accept	Reset
ETV-AHF	Alessandro Hedge Fund	ECLP-SA	Euronext Continental Cash Last Price - Disp...	1	1	1	1	1	1	1	Accept	Reset
ETV-BAR01	Barclays	COMD-SA	Euronext Commodity Derivatives Level 2 - ...	1	1	1	1	1	1	1	Accept	Reset
ETV-BM001	Banca Martina	EQID-IU	Euronext Equity and Index Derivatives Level...	3	3	3	3	3	3	3	Accept	Reset
ETV-BM001	Banca Martina	EAI-SA	Euronext All Indices - Display (SA)	1	1	1	1	1	1	1	Accept	Reset
ETV-BM001	Banca Martina	ECLP-SA	Euronext Continental Cash Last Price - Disp...	2	2	2	2	2	2	2	Accept	Reset
ETV-BM001	Banca Martina	COMD-SA	Euronext Commodity Derivatives Level 2 - ...	1	1	1	1	1	1	1	Accept	Reset
ETV-BM13	Diele Bank - new	ENPIB-SA	Non-Professional Basic	3	3	3	3	3	3	3	Accept	Reset
ETV-LOGIC	TEST LOGIC	EAI-SA	Euronext All Indices - Display (SA)	1	1	1	1	1	1	1	Accept	Reset
ETV-Logic	TEST LOGIC	EAI-SA	Euronext All Indices - Display (SA)					1	1	1	Accept	Reset
ETV-MOMIR	Momir Bank	EAI-SA	Euronext All Indices - Display (SA)	1	1	1	1	1	1	1	Accept	Reset
ETV-Momir	Momir Bank	EAI-SA	Euronext All Indices - Display (SA)					1	1	1	Accept	Reset
ETV-TEST9099	Anny F Investments	COMD-SA	Euronext Commodity Derivatives Level 2 - ...	2	2	2	2	2	2	2	Accept	Reset
ETV-TESTDAG	Novo Dagbank	ENPI-SA	Non-Professional Premium	3	3	3	3	3	3	3	Accept	Reset
ETV-TESTDAG	Novo Dagbank	EAI-SA	Euronext All Indices - Display (SA)	1	1	1	1	1	1	1	Accept	Reset
ETV-Testban	Novus Testbank	EF1B-SG	Euronext Continental Cash Last Price - Disp...					1	1	1	Accept	Reset

Submit Report

Euronext has Report Checks that will be checked when you accept the numbers in your report.

In case one of your changes triggers a Report Check, the following pop up will appear.

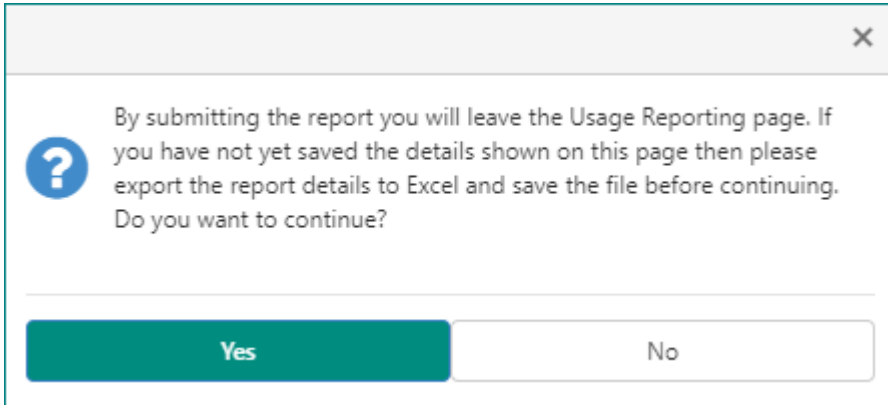
Report Check

Organisation_ID	Product...	month	question	answer
ETV-987321	EAI-SA	Feb 24	This change from 1 to 60 is out of expected bounds, please provide an explanation for quantity difference.	Enter comments here...
ETV-AHF	ECLP-SA	Aug 23	This change from 1 to 200 is out of expected bounds, please provide an explanation for quantity difference.	
ETV-BAR01	COMD-SA	Feb 24	This change from 1 to 100 is out of expected bounds, please provide an explanation for quantity difference.	

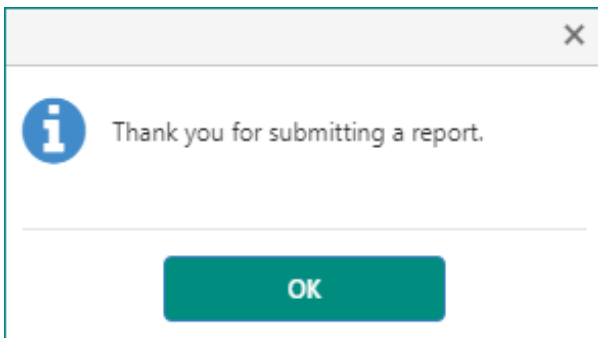
Cancel Save

You need to fill in the *'Comment'* field for each question displayed. After you have filled in the comments, you can click **'Save'**.

Once all lines have been accepted, you can click the **'Submit Report'** button in the right bottom corner on the *Usage Reporting* screen. Before submitting your report, Euronext strongly advises you to export the data you want to report to excel for your own records. You will be reminded of this when you click the **'Submit Report'** button with the following pop up.



You will be advised to export the data to Excel via the **'Export to Excel'** button and save it before submitting.



After submitting you are taken back to the *Home Page* of the *MyMarketData Portal*.

To check if the report has been validated succesfully, go to the *Account* page and check the field **'Last Report Status'**.

Euronext Test Vendor (NL06049999)

Account

Company: Euronext Test Vendor
Address: Beursplein 5, Amsterdam, 1012 JW, Netherlands
VAT Number, PO Number, Email For Receiving Invoices, Certified Email (PEC), Addressee Code (Codice Destinatario)

Reporting

Please submit your usage report up to February 2024 for Account Euronext Test Vendor (NL06049999 - ETV)

Report Online | Request Prefilled Template | Upload Excel Report

Vendor Prefix	ETV
Last Report Validated	2024-01-10
Last Month Reported	December 2023
Last Report Submitted	2024-01-10
Last Report Status	Validation Passed

IMPORTANT:

- When you are reporting the ability to access a Euronext Information Product by your subscribers, make sure to report the product codes that have the suffix **'-SA'** and/or **'-DF'**, whichever is applicable.
- When you are reporting a sub vendor, make sure to report the product codes that have the suffix **'-SV'**.
- When you are reporting the ability to access a Euronext Information Product for your organization, make sure to report such access under the product codes that have the suffix **'-IU'**.
- When you (an ASP/ESP provider) are reporting access to a Euronext Information Product for a trading member, make sure to report such access under the product codes that start with **'TM'** and have the suffix **'-TM'**.
- For more applicable product codes we refer to [Appendix 3](#).

(Note, your use which meets all requirements for operational use, may be reported under product codes that have the suffix **'-OPS'**)

Note, if you are unable to report the total number of reportable units during a calendar month, please contact marketdataoperations_team@euronext.com for proper guidance on how to report.

5. USAGE REPORTING – EXCEL UPLOAD

This section describes how to report your Usage via an Excel spreadsheet upload in Euronext's *MyMarketData Portal*. If you want to have access to the Excel upload functionality in the *MyMarketData Portal*, please contact marketdataoperations_team@euronext.com.

5.1 CREATING A LOCATION

When using the upload functionality, new Locations are created by including them in your upload as a new line item.

5.2 REQUEST A PREFILLED TEMPLATE

You can request *MyMarketData* to send you an email with a prefilled reporting template via the '**Request Prefilled Template**' button.

Euronext Test Vendor (NL06049999)

Account

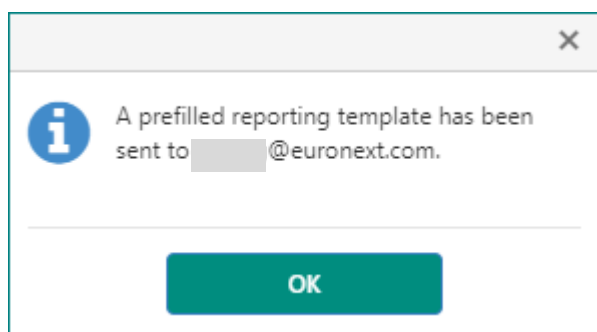
Company	Euronext Test Vendor
Address	Beursplein 5 Amsterdam, 1012 JW Netherlands
VAT Number	
PO Number	
Email for Receiving Invoices	
Certified Email (PEC)	
Addressee Code (Codice Destinatario)	

Reporting

Please submit your usage report up to February 2024 for Account Euronext Test Vendor (NL06049999 - ETV)

Report Online
 Request Prefilled Template
 Upload Excel Report

Vendor Prefix	ETV
Last Report Validated	2024-01-10
Last Month Reported	December 2023
Last Report Submitted	2024-01-10
Last Report Status	Validation Passed



The template will be prefilled with the last reported inventory and will include all months that still need to be reported since the last reported month. If the reporting obligation for the last reportable month has already been met, the template will include the last reported inventory from the last reported month.

5.3 FORMAT OF THE EXCEL UPLOAD

For the required format of the excel upload please see below table. Please note:

- All columns need to be included in the upload file, with the exact Field Names
- Grey fields are mandatory, i.e. they must contain data
- The order of the columns is not important for the upload
- Prevent trailing spaces in any of the fields
- To unsubscribe users or entities with the ability to access the Euronext market data, the user or entity must be reported with a quantity of 0. Having reported the same user or entity with a quantity of 0 will be considered a 'delete'. The user or entity is thereafter no longer considered 'reportable' and may be removed from the report. It always remains possible to report new inventory for the same user or entity at a later date.
- Retro-active months are allowed up to **6 months** by creating multiple lines for the same Location Number and Product Code, but if added no gaps are allowed. The report must contain all months as of the first retro-active month present for that Location Number and Product Code up to the actual month of reporting.

FIELD NAME	MANDATORY	CONSTRAINTS	COMMENT
Market	Yes	Only one value allowed in a single report	EN for Euronext
Client Prefix	Yes	Only one value allowed in a single report. The combination of Client Prefix and Location Number may not exceed 30 characters.	
Location Number	Yes	the combination of Client Prefix and Location Number may not exceed 30 characters.	Enter the unique identifier (Location ID) by which you can identify the Location. The EMDA reporting policy indicates the basic requirements for when the creation of a Location is necessary.
Location Name	Yes	maximum 64 characters	Enter your organisation's statutory name if internal distribution and use. Enter your subscriber's statutory name if subscriber access. Enter your sub vendor's statutory name if redistributor access. IMPORTANT: the name of a 'Location' should always be the statutory name of the applicable organisational (I.e. if the statutory name is 'ABCD Ltd.', please include that in full and not just 'ABCD')
Address1	Yes	maximum 50 characters	Enter the applicable address.

Address2	No	maximum 50 characters	
Address3	No	maximum 50 characters	
City	Yes	maximum 50 characters	Enter the applicable city.
State	No	maximum 32 characters	
Postal Code	No	maximum 15 characters	Enter the applicable postal code / zip code.
Country Code	Yes	must be an ISO 3166-1 alpha-2 country code	Please enter the country code using the ISO 3166-1-alpha-2 list provided with the prefilled template.
Contact Last Name	No	maximum 32 characters. If any contact information is added, this field is mandatory.	Enter the last name of the Location's contact person. IMPORTANT: even though contact detail fields are not required fields, Euronext recommends that you provide up-to-date contact details for each Location.
Contact First Name	No	maximum 32 characters	Enter the first name of the Location's contact person. IMPORTANT: even though contact detail fields are not required fields, Euronext recommends that you provide up-to-date contact details for each Location.
Contact Telephone No	No	maximum 50 characters	Enter the telephone number of the Location's contact person.
Contact Email Address	No	maximum 64 characters	Enter the e-mail of the Location's contact person. IMPORTANT: even though contact detail fields are not required fields, Euronext recommends that you provide up-to-date contact details for each Location.
Effective Month	Yes	Must be formatted according to ISO 8601 Standard (e.g. 2021-07-31 for July 2021)	Enter the date for which this line item's Monthly Total Quantity is for. Must be ISO 8601 format (YYYY-MM-DD). [YYYY] indicates a four-digit year, 0000 through 9999. [MM] indicates a two-digit month of the year, 01 through 12. [DD] indicates a two-digit day of that month, 01 through 31.
Product Code	Yes		Enter the applicable product code for which you want to report the number of applicable units of count (i.e. the quantity). IMPORTANT: When you are reporting the ability to access an Euronext Market Data Product by your subscribers, make sure to report the product codes that have the suffix '-SA' and/or '-DF' , whichever is applicable. When you are reporting a sub vendor, make sure to report the product codes that have the suffix '-SV' . When you are reporting the ability to access a Euronext Information Products for your internal organization make sure to report such access under the product codes that have the suffix '-IU' .

			<p>For more applicable product codes, please see Appendix 3. (Note, your use which meets all requirements for Operational Use may be reported under product codes that have the suffix '-OPS'. For more information about Euronext market data products and product codes please contact marketdataoperations_team@euronext.com.</p>
Monthly Total Quantity	Yes		Enter the total number of reportable units of count with the ability to access to information for this Location, product and month.
Comments	No	maximum 100 characters	Please provide a short explanation in case of large variability in quantity compared to previous month or when reporting back-dated corrections.

5.4 UPLOAD AN EXCEL REPORT

To upload an Excel report please click on the **'Upload Excel Report'** button under the reporting account.

Euronext Test Vendor (NL06049999)

Company	Euronext Test Vendor
Address	Beursplein 5 Amsterdam, 1012 JW Netherlands

Reporting

Please submit your usage report up to November 2021 for Account Euronext Test Vendor (NL06049999 - ETV)

[Report Online](#) [Request Prefilled Template](#) [Upload Excel Report](#) ←

Vendor Prefix	ETV
Last Report Validated	2021-10-01
Last Month Reported	September 2021
Last Date Submitted	2021-10-01
Last Report Status	Validation Passed

You will get the below pop up.

Upload Excel Report

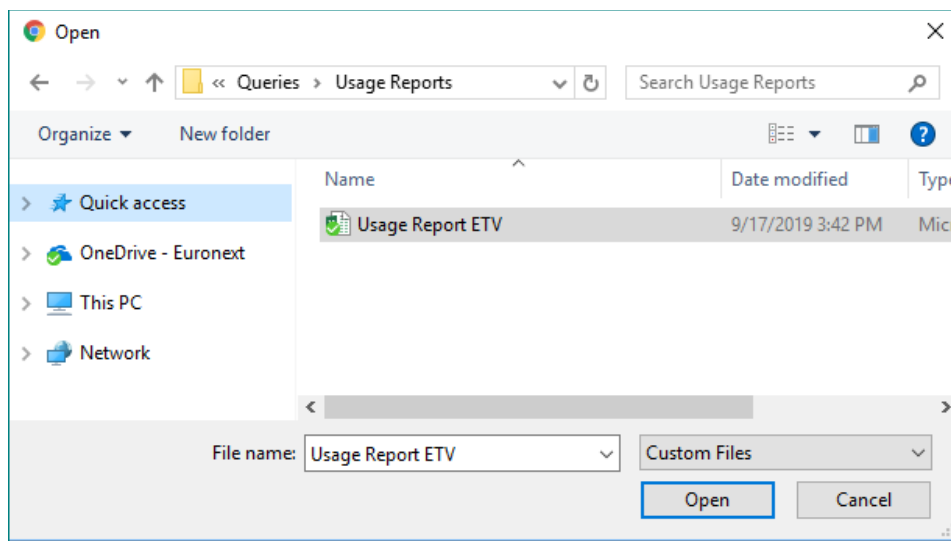
Please select the report containing the usage for Account : NL06049999

[Select Report](#)

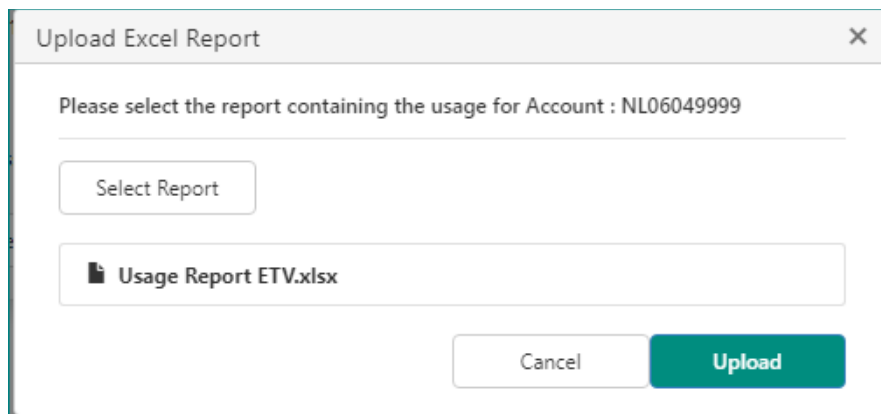
No files selected.

[Cancel](#) [Upload](#)

Click on **'Select Report'** and your File Explorer will open where you can select the file to be uploaded.



Check that you have selected the correct file and click **'Upload'** to submit your report.



After clicking **'Upload'** the report will be sent to Euronext to generate a vrxml file which then gets placed in a queue to enter Euronext's Reporting Validation Process.

In case of issues with your attempted upload you will be notified via email. If the Last Report Status is *'Validation Failed'* please contact marketdataoperations_team@euronext.com.

The status of the report will be updated on the *account page*. If the file was successfully processed the associated reporting task will be considered completed and removed from the *Open Task list*.

Euronext Test Vendor (NL06049999)	
Company	Euronext Test Vendor
Address	Beursplein 5 Amsterdam, 1012 JW Netherlands
Reporting	
Please submit your usage report up to November 2021 for Account Euronext Test Vendor (NL06049999 - ETV)	
<input checked="" type="checkbox"/> Report Online <input type="checkbox"/> Request Prefilled Template <input type="button" value="Upload Excel Report"/>	
Vendor Prefix	ETV
Last Report Validated	2021-10-01
Last Month Reported	September 2021
Last Date Submitted	2021-10-01
Last Report Status	Validation Passed

APPENDIX 1: OVERVIEW OF THE REPORTING CATEGORIES

The table below provides an overview of your reporting obligation per reporting category. More detailed information is outlined in the EMDA Reporting Policy.

REPORTING CATEGORY	SUBCATEGORY (IF APPLICABLE)	LOCATION ACCOUNT NUMBERS	UNIT OF COUNT	PRODUCT CODES
Reporting your Internal Use of Information	Internal Use (standard)	Location account number free of choice (i.e. at your discretion)	User per Source / Device (where unable to allocate to a single natural person)	For product codes please click here .
	Operational Use		Responsible Person	
			User per Source / Device (where unable to allocate to a single natural person)	
Reporting your Subscriber's Use of Information	Subscriber Internal Use (Information Supplier-Controlled)	A separate Location Account Number for each Subscriber and free of choice (i.e. at your discretion)	Device	For product codes please click here .
	Subscriber Real-Time (Recipient-Controlled)		Subscriber	
	Subscriber Delayed (Recipient-Controlled)			
	Subscriber After-Midnight (Recipient-Controlled)			
Reporting Subscribers Approved to report Natural User	Information Supplier-Controlled Information	A separate Location Account Number for each Subscriber (i.e. at your discretion)	Device for (Information-Supplier Controlled)	For product codes please click here .
	Recipient-Controlled Information		Datafeed/Installation (Recipient-Controlled)	
Reporting the Provision of Managed Non-Display Services	Provision of Access (Non-billable)	A separate Location Account Number for each Subscriber (i.e. at your discretion)	Subscriber	For product codes please click here .
Reporting the Provision of ASP Services/ESP Services to Trading Members	Provision of Access (Non-billable)	A separate Location Account Number for each Subscriber (i.e. at your discretion)	Subscriber (a Trading Member of Euronext)	For product codes please click here .

REPORTING CATEGORY	SUBCATEGORY (IF APPLICABLE)	LOCATION ACCOUNT NUMBERS	UNIT OF COUNT	PRODUCT CODES
Reporting your Non-Professional Subscriber's Use of Information	Non-Professional Subscriber	A separate Location Account Number specified by Euronext	Device	For product codes please click here .
	Page View Requests		Page View	
	White Label Services	A separate Location Account Number for each White Label Service Client and specified by Euronext	Device (professional and non-professional subscribers) or Page View	
Reporting the Provision of White Label Services	Real-Time White Label Services	A separate Location Account Number for each White Label Service Client and free of choice (i.e. at your discretion)	White Label Service	For product codes please click here .
	Delayed White Label Services			
	After-Midnight White Label Services			
Reporting the Redistribution of Information to Sub Vendors	Real-Time Data Sub Vendors	A separate Location Account Number for each Sub Vendor and free of choice (i.e. at your discretion)	Sub Vendor	For product codes please click here .
	Delayed Data Sub Vendors			
	After-Midnight Data Sub Vendors			

APPENDIX 2: UNIT OF COUNTS

This appendix provides more detailed information about the different unit of counts.

A2.1. DEVICE

A device unit of count is applicable:

- When you (the redistributor) provide information supplier-controlled real-time data to subscribers, either professional subscribers or non-professional subscribers, for the purpose of display. This means that the delivery mechanism does not allow the subscriber to control the type and number of users and/or devices that can access the real-time data and is thereby incapable of further dissemination of such data by such subscriber.
- When you (the redistributor) provide information supplier-controlled real-time data to non-professional subscribers (i.e. private investors).
- For all your internal display use or your subscriber's display use of recipient-controlled real time market data on a device, which cannot be allocated to a single natural person.

A device means any terminal, Access ID or other method capable of accessing, receiving, processing, displaying and/or otherwise Using the Information including, but without limitation, any listening device or any other form of audio communication or similar equipment.

IMPORTANT: Simultaneous access on a device is not allowed. For example, in case of simultaneous access on a single device (incl. user id), each instance with access to real-time market data on that device (incl. user id) is to be counted and reported.

In accordance with the unit of count, device, you (or your subscriber, in case of recipient-controlled entitlement) should count how many devices have the ability to access real-time data for each separate information product provided by you (the redistributor). You should report this number to Euronext.

A2.2. USER PER SOURCE

A user per source unit of count is applicable:

- When you (the redistributor) provide recipient-controlled real-time data to subscribers, professionals, for the purpose of display. This means that the delivery mechanism allows the subscriber to control the type and number of users and/or devices that can access the real-time data and is thereby capable of further dissemination of such data by such subscriber.
- In case of your internal distribution for the purpose of display use.

In accordance with the unit of count, User per Source, you (or your subscriber, in case of recipient-controlled entitlement) should count how many natural users have the ability to access real-time data for each separate information product provided by you (the redistributor). You should report this number to Euronext.

A2.3. EXAMPLE 'USER PER SOURCE' - WHEN YOU ARE A REDISTRIBUTOR

The illustration below describes a situation in which you (the redistributor):

- is internally distributing and using real-time data; and
- is redistributing real-time data to a subscriber

In the example below you should report 1 user per source (for your internal access and use) and 1 device and 1 user per source (for your subscriber's access and use).

1. Jack Brown one of your employees has the ability to access your real-time data products on two display devices. For such internal distribution and use of real-time market data the '**User per Source**' unit of count applies. Therefore, you should count and report to Euronext 1 user (Jack Brown). Note, even though Jack Brown has access to real-time data twice, he only has to be counted once, as both are fed from one source.
- The diagram illustrates two scenarios of data access. On the left, under 'INFORMATION SUPPLIER-CONTROLLED ENTITLEMENT', a server icon labeled '1' is connected to three components: a person icon labeled 'Jack Brown', a server rack icon labeled 'Non-Display R (non-trading activities)', and another server rack icon labeled 'Non-Display S (non-trading activities)'. A green circle with '1' is placed near the server icon. On the right, under 'RECIPIENT-CONTROLLED ENTITLEMENT', a server icon labeled '1' is connected to three components: a person icon labeled 'John Smith', a server rack icon labeled 'Non-Display R (non-trading activities)', and another server rack icon labeled 'Non-Display S (non-trading activities)'. A blue circle with '1' is placed near the server icon. A green line connects the server icon on the left to the server icon on the right, indicating data flow between the two firms.
2. One of your applications has the ability to access information for the creation of derived data. For non-display use of information, you have to be licensed separately via the Order Form.
 3. John Smith one of your subscriber's employees has the ability to access your real-time information supplier-controlled data product on one display device. For the display of real-time information supplier-controlled data the '**Device**' unit of count applies. Therefore, you should count and report to Euronext 1 device (that of John Smith).
 4. John Smith also has the ability to access the real-time data products on two display devices, but in this case through recipient-controlled entitlement. For the display of real-time recipient-controlled data the '**User per Source**' unit of count applies. In this case, the subscriber should count and report to you 1 user (John Smith). You then shall report this user to Euronext. Note, even though John Smith has access to market data twice, it only has to be counted once, as it comes from one source (your datafeed product)
 5. Lastly, one of your subscriber's applications has the ability to access your real-time recipient-controlled data product for non-display risk management. For non-display use the subscriber has to sign an agreement with Euronext, if the subscriber is not already part of the EMDA agreement yet. It is your responsibility to ensure that all of your subscribers that are in receipt of recipient-controlled information from you have entered into an agreement with Euronext (whether they have non-display use or not).

A2.4. EXAMPLE 'USER PER SOURCE' - WHEN YOU ARE A TRADING MEMBER

The (simplified) illustration of market data access through market connectivity services is meant to provide more clarity on how to count and report the number of users with the ability to access Euronext market data.

In accordance with the unit of count, **User per Source**, you should count how many natural users have the ability to access market data for each market connectivity service (provider) and report the aggregated number per country.

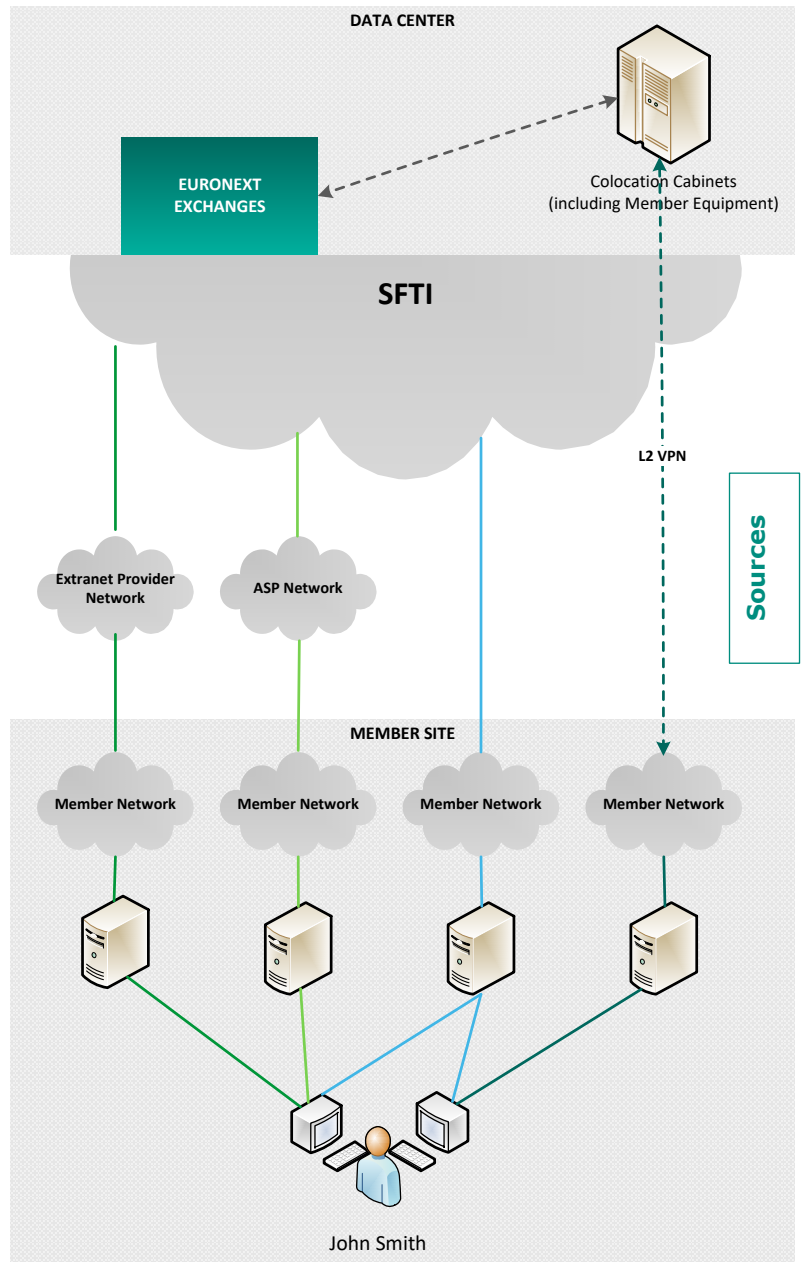
In the illustration John Smith is a user at a member firm and this user has two terminals:

- On one terminal John Smith has access to market data as part of three market connectivity services or 'Sources' (Extranet Service Provider service, Application Service Provider service, Euronext Direct Connectivity).
- On one terminal John Smith has access to market data as part of two market connectivity services or 'Sources' (Euronext Direct Connectivity, Colocation Cabinet).

In this case, the member firm should count and report John Smith four times (i.e. under four main locations). Once for the extranet service provider, once for application service provider, once for the Euronext Direct Connectivity and once for the Euronext Colocation.

Note, even though John Smith has access to market data Euronext Direct Connectivity twice, it only has to be counted once, as it comes from one source.

For more information about how to apply the User per Source unit of count please contact databyeuronext@euronext.com.



APPENDIX 3: EURONEXT MARKET DATA PRODUCTS & PRODUCTS CODES (REDISTRIBUTOR)

The tables below provide more information about Euronext Information Products applicable under the Euronext Market Data Agreement. The product codes described are the product codes either recommended or required by Euronext.

EURONEXT MARKET DATA INFORMATION PRODUCT	REPORTING YOUR INTERNAL USE OF INFORMATION		REPORTING YOUR SUBSCRIBER'S USE OF INFORMATION				REPORTING SUBSCRIBERS APPROVED TO REPORT NATURAL USER	
	INTERNAL USE	OPERATIONAL USE	REAL-TIME INFORMATION SUPPLIER-CONTROLLED DATA	REAL-TIME RECIPIENT-CONTROLLED DATA	DELAYED-RECIPIENT-CONTROLLED DATA	AFTER-MIDNIGHT RECIPIENT-CONTROLLED DATA	REAL-TIME INFORMATION SUPPLIER-CONTROLLED DATA	REAL-TIME RECIPIENT-CONTROLLED DATA
<i>Delivery Type</i>	<i>Internal Other Use</i>	<i>Operational Use</i>	<i>Supplier-Controlled Professional</i>	<i>Datafeed to End Customer</i>			<i>Supplier-Controlled Professional</i>	<i>Datafeed to End Customer</i>
EURONEXT ALL INDICES	EAI-IU	EAI-OPS	EAI-SA	EAI-DF	EAI-DFD	EAI-AMFD	EAI-SDB	EAI-DDB
EURONEXT CONTINENTAL CASH (CONSOLIDATED PACK) This Information Product is mapped to Cash Level 2, Cash Level 1 and Cash Last Price product codes. <i>(available in Level 2, Level 1 and Last Price)</i>	ECB10-IU ECB1-IU ECLP-IU	ECB10-OPS ECB1-OPS ECLP-OPS	ECB10-SA ECB1-SA ECLP-SA	ECB10-DF ECB1-DF ECLP-DF	ECB10-DFD ECB1-DFD ECLP-DFD	ECB10-AMFD ECB1-AMFD ECLP-AMFD	ECB10-SDB ECB1-SDB ECLP-SDB	ECB10-DDB ECB1-DDB ECLP-DDB

EURONEXT MARKET DATA INFORMATION PRODUCT	REPORTING THE PROVISION OF MANAGED NON-DISPLAY SERVICES	REPORTING THE PROVISION OF ASP SERVICES/ESP SERVICES TO TRADING MEMBERS	REPORTING THE PROVISION OF WHITE LABEL SERVICES			REPORTING THE REDISTRIBUTION OF INFORMATION TO SUB VENDORS		
	PROVISION OF MANAGED NON-DISPLAY SERVICES	PROVISION OF ASP SERVICES/ESP SERVICES TO TRADING MEMBERS	REAL-TIME WHITE LABEL	DELAYED WHITE LABEL	AFTER-MIDNIGHT WHITE LABEL	REAL-TIME DATA SUB VENDOR	DELAYED DATA SUB VENDOR	AFTER-MIDNIGHT DATA SUB VENDOR
<i>Delivery Type</i>	<i>Managed Non-Display Provider Service</i>	<i>Market Connectivity Service</i>	<i>White Label Service</i>			<i>Datafeed to Sub Vendor</i>		
EURONEXT ALL INDICES	VCEAI-MND	TMEAI-TM	EAI-WL	EAI-DWL	EAI-AMWL	SVEAI-SV	SVDEAI-SV	SVAMEAI-SV
EURONEXT CONTINENTAL CASH (CONSOLIDATED PACK) This Information Product is mapped to Cash Level 2, Cash Level 1 and Cash Last Price product codes. <i>(available in Level 2, Level 1 and Last Price)</i>	VCECB10-MND VCECB1-MND VCECLP-MND	TMECB10-TM TMECB1-TM TMECLP-TM	ECB10-WL ECB1-WL ECLP-WL	ECB10-DWL ECB1-DWL ECLP-DWL	ECB10-AMWL ECB1-AMWL ECLP-AMWL	SVECB10-SV SVECB1-SV SVECLP-SV	SVDECB10-S SVDECB1-SV SVDECLP-SV	SVAMECB10-S SVAMECB1-SV SVAMECLP-SV

EURONEXT MARKET DATA INFORMATION PRODUCT	REPORTING YOUR INTERNAL USE OF INFORMATION		REPORTING YOUR SUBSCRIBER'S USE OF INFORMATION				REPORTING SUBSCRIBERS APPROVED TO REPORT NATURAL USER	
	INTERNAL USE	OPERATIONAL USE	REAL-TIME INFORMATION SUPPLIER-CONTROLLED DATA	REAL-TIME RECIPIENT-CONTROLLED DATA	DELAYED RECIPIENT-CONTROLLED DATA	AFTER-MIDNIGHT RECIPIENT-CONTROLLED DATA	REAL-TIME INFORMATION SUPPLIER-CONTROLLED DATA	REAL-TIME RECIPIENT-CONTROLLED DATA
<i>Delivery Type</i>	<i>Internal Other Use</i>	<i>Operational Use</i>	<i>Supplier-Controlled Professional</i>	<i>Datafeed to End Customer</i>			<i>Supplier-Controlled Professional</i>	<i>Datafeed to End Customer</i>
EURONEXT CONTINENTAL EQUITIES <i>(available in Level 2 and Last Price)</i>	EQTL2-IU EQTLP-IU	EQTL2-OPS EQTLP-OPS	EQTL2-SA EQTLP-SA	EQTL2-DF EQTLP-DF	EQTL2-DFD EQTLP-DFD	EQTL2-AMFD EQTLP-AMFD	EQTL2-SDB EQTLP-SDB	EQTL2-DDB EQTLP-DDB
EURONEXT BEST OF BOOKS <i>(available in Level 2)</i>	RMFQ-IU	RMFQ-OPS	RMFQ-SA	RMFQ-DF	RMFQ-DFD	RMFQ-AMFD	RMFQ-SDB	RMFQ-DDB
EURONEXT BLOCK <i>(available in Last Price)</i>	EBT-IU	EBT-OPS	EBT-SA	EBT-DF	EBT-DFD	EBT-AMFD	EBT-SDB	EBT-DDB
EURONEXT ETFs AND FUNDS <i>(available in Level 2 and Last Price)</i>	ETFL2-IU ETFLP-IU	ETFL2-OPS ETFLP-OPS	ETFL2-SA ETFLP-SA	ETFL2-DF ETFLP-DF	ETFL2-DFD ETFLP-DFD	ETFL2-AMFD ETFLP-AMFD	ETFL2-SDB ETFLP-SDB	ETFL2-DDB ETFLP-DDB
EURONEXT WARRANTS AND CERTIFICATES <i>(available in Level 2 and Last Price)</i>	EWCL2-IU EWCLP-IU	EWCL2-OPS EWCLP-OPS	EWCL2-SA EWCLP-SA	EWCL2-DF EWCLP-DF	EWCL2-DFD EWCLP-DFD	EWCL2-AMFD EWCLP-AMFD	EWCL2-SDB EWCLP-SDB	EWCL2-DDB EWCLP-DDB

EURONEXT MARKET DATA INFORMATION PRODUCT	REPORTING THE PROVISION OF MANAGED NON-DISPLAY SERVICES	REPORTING THE PROVISION OF ASP SERVICES/ESP SERVICES TO TRADING MEMBERS	REPORTING THE PROVISION OF WHITE LABEL SERVICES			REPORTING THE REDISTRIBUTION OF INFORMATION TO SUB VENDORS		
	PROVISION OF MANAGED NON-DISPLAY SERVICES	PROVISION OF ASP SERVICES/ESP SERVICES TO TRADING MEMBERS	REAL TIME WHITE LABEL	DELAYED WHITE LABEL	AFTER-MIDNIGHT WHITE LABEL	REAL-TIME DATA SUB VENDOR	DELAYED DATA SUB VENDOR	AFTER-MIDNIGHT DATA SUB VENDOR
Delivery Type	<i>Managed Non-Display Provider Service</i>	<i>Market Connectivity Service</i>	<i>White Label Service</i>			<i>Datafeed to Sub Vendor</i>		
EURONEXT CONTINENTAL EQUITIES <i>(available in Level 2 and Last Price)</i>	VCEQTL2-MND VCEQTLP-MND	TMEQTL2-TM TMEQTLP-TM	EQTL2-WL EQTLP-WL	EQTL2-DWL EQTLP-DWL	EQTL2-AMWL EQTLP-AMWL	SVEQTL2-SV SVEQTLP-SV	SVDEQTL2-S SVDEQTLP-S	SVAMEQTL2-S SVAMEQTLP-S
EURONEXT BEST OF BOOK <i>(available in Level 2)</i>	VCRMFAQ-MND	TMRMFAQ-TM	RMFAQ-WL	RMFAQ-DWL	RMFAQ-AMWL	SVRMFAQ-SV	SVDRMFAQ-S	SVAMRMFAQ-S
EURONEXT BLOCK <i>(available in Last Price)</i>	VCEBT-MND	TMEBT-TM	EBT-WL	EBT-DWL	EBT-AMWL	SVEBT-SV	SVDEBT-SV	SVAMEBT-SV
EURONEXT ETFs AND FUNDS <i>(available in Level 2 and Last Price)</i>	VCETFL2-MND VCETFLP-MND	TMETFL2-TM TMETFLP-TM	ETFL2-WL ETFLP-WL	ETFL2-DWL ETFLP-DWL	ETFL2-DWL ETFLP-DWL	SVETFL2-SV SVETFLP-SV	SVDETFL2-S SVDETFLP-S	SVAMETFL2-S SVAMETFLP-S
EURONEXT WARRANTS AND CERTIFICATES <i>(available in Level 2 and Last Price)</i>	VCEWCL2-MND VCEWCLP-MND	TMEWCL2-TM TMEWCLP-TM	EWCL2-WL EWCLP-WL	EWCL2-DWL EWCLP-DWL	EWCL2-DWL EWCLP-DWL	SVEWCL2-SV SVEWCLP-SV	SVDEWCL2-S SVDEWCLP-S	SVAMEWCL2-S SVAMEWCLP-S

EURONEXT MARKET DATA INFORMATION PRODUCT	REPORTING YOUR INTERNAL USE OF INFORMATION		REPORTING YOUR SUBSCRIBER'S USE OF INFORMATION				REPORTING SUBSCRIBERS APPROVED TO REPORT NATURAL USER	
	INTERNAL USE	OPERATIONAL USE	REAL-TIME INFORMATION SUPPLIER-CONTROLLED DATA	REAL-TIME RECIPIENT-CONTROLLED DATA	DELAYED RECIPIENT-CONTROLLED DATA	AFTER-MIDNIGHT RECIPIENT-CONTROLLED DATA	REAL-TIME INFORMATION SUPPLIER-CONTROLLED DATA	REAL-TIME RECIPIENT-CONTROLLED DATA
<i>Delivery Type</i>	<i>Internal Other Use</i>	<i>Operational Use</i>	<i>Supplier- Controlled Professional</i>	<i>Datafeed to End Customer</i>			<i>Supplier- Controlled Professional</i>	<i>Datafeed to End Customer</i>
EURONEXT FIXED INCOME <i>(available in Level 2 and Last Price)</i>	EFIL2-IU EFILP-IU	EFIL2-OPS EFILP-OPS	EFIL2-SA EFILP-SA	EFIL2-DF EFILP-DF	EFIL2-DFD EFILP-DFD	EFIL2-AMFD EFILP-AMFD	EFIL2-SDB EFILP-SDB	EFIL2-DDB EFILP-DDB
EURONEXT DUBLIN EQUITIES <i>(available in Level 2 and Last Price)</i>	DEQL2-IU DEQLP-IU	DEQL2-OPS DEQLP-OPS	DEQL2-SA DEQLP-SA	DEQL2-DF DEQLP-DF	DEQL2-DFD DEQLP-DFD	DEQL2-AMFD DEQLP-AMFD	DEQL2-SDB DEQLP-SDB	DEQL2-DDB DEQLP-DDB
OSLO BØRS EQUITIES <i>(available in Level 2 and Last Price)</i>	OEQL2-IU OEQLP-IU	OEQL2-OPS OEQLP-OPS	OEQL2-SA OEQLP-SA	OEQL2-DF OEQLP-DF	OEQL2-DFD OEQLP-DFD	OEQL2-AMFD OEQLP-AMFD	OEQL2-SDB ODEQLP-SDB	OEQL2-DDB OEQLP-DDB
NORDIC ABM <i>(available in Level 2)</i>	ABM-IU	ABM-OPS	ABM-SA	ABM-DF	ABM-DFD	ABM-AMFD	ABM-SDB	ABM-DDB
EURONEXT EQUITY AND INDEX DERIVATIVES <i>(available in Level 2 and Last Price)</i>	EQID-IU EQIDLPIU	EQID -OPS EQIDLPIOPS	EQID -SA EQIDLPI-SA	EQID -DF EQIDLPI-DF	EQID-DFD EQIDLPI-DFD	EQID-AMFD EQIDLPI-AMFD	EQID-SDB EQIDLPI-SDB	EQID-DDB EQIDLPI-DDB

EURONEXT MARKET DATA INFORMATION PRODUCT	REPORTING THE PROVISION OF MANAGED NON-DISPLAY SERVICES	REPORTING THE PROVISION OF ASP SERVICES/ESP SERVICES TO TRADING MEMBERS	REPORTING THE PROVISION OF WHITE LABEL SERVICES			REPORTING THE REDISTRIBUTION OF INFORMATION TO SUB VENDORS		
	PROVISION OF MANAGED NON-DISPLAY SERVICES	PROVISION OF ASP SERVICES/ESP SERVICES TO TRADING MEMBERS	REAL TIME WHITE LABEL	DELAYED WHITE LABEL	AFTER-MIDNIGHT WHITE LABEL	REAL-TIME DATA SUB VENDOR	DELAYED DATA SUB VENDOR	AFTER-MIDNIGHT DATA SUB VENDOR
<i>Delivery Type</i>	<i>Managed Non-Display Provider Service</i>	<i>Market Connectivity Service</i>	<i>White Label Service</i>			<i>Datafeed to Sub Vendor</i>		
EURONEXT FIXED INCOME <i>(available in Level 2 and Last Price)</i>	VCEFIL2-MND VCEFILP-MND	TMEFIL2-TM TMEFILP-TM	EFIL2-WL EFILP-WL	EFIL2-DWL EFILP-DWL	EFIL2-AMWL EFILP-AMWL	SVEFIL2-SV SVEFILP-SV	SVDEFIL2-S SVDEFILP-S	SVAMEFIL2-S SVAMEFILP-S
EURONEXT DUBLIN EQUITIES <i>(available in Level 2 and Last Price)</i>	VCDEQL2-MND VCDEQLP-MND	TMDEQL2-TM TMDEQLP-TM	DEQL2-WL DEQLP-WL	DEQL2-DWL DEQLP-DWL	DEQL2-AMWL DEQLP-AMWL	SVDEQL2-SV SVDEQLP-SV	SVDDEQL2-SV SVDDEQLP-SV	SVAMDEQL2-SV SVAMDEQLP-SV
OSLO BØRS EQUITIES <i>(available in Level 2 and Last Price)</i>	VCOEQL2-MND VCOEQLP-MND	TMOEQL2-TM TMOEQLP-TM	OEQL2-WL OEQLP-WL	OEQL2-DWL OEQLP-DWL	OEQL2-AMWL OEQLP-AMWL	SVOEQL2-SV SVOEQLP-SV	SVDOEQL2-SV SVDOEQLP-SV	SVAMOEQL2-SV SVAMOEQLP-SV
NORDIC ABM <i>(available in Last Price)</i>	VCABM-MND	TMABM-TM	ABM-WL	ABM-DWL	ABM-AMWL	SVABM-SV	SVDABM-SV	SVAMABM-SV
EURONEXT EQUITY AND INDEX DERIVATIVES <i>(available in Level 2 and Last Price)</i>	VCEQID-MND VCEQIDL-MND	TMEQID-TM TMEQIDL-TM	EQID-WL EQIDL-WL	EQID-DWL EQIDL-DWL	EQID-AMWL EQIDL-AMWL	SVEQID-SV SVEQIDL-S	SVDEQID-SV SVDEQIDL-S	SVAMEQID-SV SVAMEQIDL-S

EURONEXT MARKET DATA INFORMATION PRODUCT	REPORTING YOUR INTERNAL USE OF INFORMATION		REPORTING YOUR SUBSCRIBER'S USE OF INFORMATION				REPORTING SUBSCRIBERS APPROVED TO REPORT NATURAL USER	
	INTERNAL USE	OPERATIONAL USE	REAL-TIME INFORMATION SUPPLIER-CONTROLLED DATA	REAL-TIME RECIPIENT-CONTROLLED DATA	DELAYED RECIPIENT-CONTROLLED DATA	AFTER-MIDNIGHT RECIPIENT-CONTROLLED DATA	REAL-TIME INFORMATION SUPPLIER-CONTROLLED DATA	REAL-TIME RECIPIENT-CONTROLLED DATA
<i>Delivery Type</i>	<i>Internal Other Use</i>	<i>Operational Use</i>	<i>Supplier-Controlled Professional</i>	<i>Datafeed to End Customer</i>			<i>Supplier-Controlled Professional</i>	<i>Datafeed to End Customer</i>
EURONEXT COMMODITY DERIVATIVES <i>(available in Level 2 and Last Price)</i>	COMD-IU COMLP-IU	COMD-OPS COMLP-OPS	COMD-SA COMLP-SA	COMD-DF COMLP-DF	COMD-DFD COMLP-DFD	COMD-AMFD COMLP-AMFD	COMD-SDB COMLP-SDB	COMD-DDB COMLP-DDB
VINX ALL	VINXA-IU	VINXA-OPS	VINXA-SA	VINXA-DF	VINXA-DFD	VINXA-AMFD	VINXA-SDB	VINXA-DDB
VINX PLUS	VINXP-IU	VINXP-OPS	VINXP-SA	VINXP-DF	VINXP-DFD	VINXP-AMFD	VINXP-SDB	VINXP-DDB

EURONEXT MARKET DATA INFORMATION PRODUCT	REPORTING THE PROVISION OF MANAGED NON-DISPLAY SERVICES	REPORTING THE PROVISION OF ASP SERVICES/ESP SERVICES TO TRADING MEMBERS	REPORTING THE PROVISION OF WHITE LABEL SERVICES			REPORTING THE REDISTRIBUTION OF INFORMATION TO SUB VENDORS		
	PROVISION OF MANAGED NON-DISPLAY SERVICES	PROVISION OF ASP SERVICES/ESP SERVICES TO TRADING MEMBERS	REAL TIME WHITE LABEL	DELAYED WHITE LABEL	AFTER-MIDNIGHT WHITE LABEL	REAL-TIME DATA SUB VENDOR	DELAYED DATA SUB VENDOR	AFTER-MIDNIGHT DATA SUB VENDOR
<i>Delivery Type</i>	<i>Managed Non-Display Provider Service</i>	<i>Market Connectivity Service</i>	<i>White Label Service</i>			<i>Datafeed to Sub Vendor</i>		
EURONEXT COMMODITY DERIVATIVES <i>(available in Level 2 and Last Price)</i>	VCCOMD-MND VCCOMLP-MND	TMCOMD-TM TMCOMLP-TM	COMD-WL COMLP-WL	COMD-DWL COMLP-DWL	COMD-AMWL COMLP-AMWL	SVCOMD-SV SVCOMLP-SV	SVDKOMD-SV SVDKOMLP-S	SVAMKOMD-SV SVAMKOMLP-S
VINX ALL	N/A	N/A	N/A	N/A	N/A	SVVINXA-SV	N/A	N/A
VINX PLUS	N/A	N/A	N/A	N/A	N/A	SVVINXP-SV	N/A	N/A

EURONEXT MARKET DATA INFORMATION PRODUCT	REPORTING YOUR INTERNAL USE OF INFORMATION		REPORTING YOUR SUBSCRIBER'S USE OF INFORMATION				REPORTING SUBSCRIBERS APPROVED TO REPORT NATURAL USER	
	INTERNAL USE	OPERATIONAL USE	REAL-TIME INFORMATION SUPPLIER-CONTROLLED DATA	REAL-TIME RECIPIENT - CONTROLLED DATA	DELAYED RECIPIENT-CONTROLLED DATA	AFTER-MIDNIGHT RECIPIENT-CONTROLLED DATA	REAL-TIME INFORMATION SUPPLIER-CONTROLLED DATA	REAL-TIME RECIPIENT-CONTROLLED DATA
<i>Delivery Type</i>	<i>Internal Other Use</i>	<i>Operational Use</i>	<i>Supplier-Controlled Professional</i>	<i>Datafeed to End Customer</i>			<i>Supplier-Controlled Professional</i>	<i>Datafeed to End Customer</i>
EURONEXT MILAN ALL MARKETS¹ <i>(available in Level 2, Level 1 and Last Price)</i>	MAML2-IU	MAML2-OPS	MAML2-SA	MAML2-DF	DDMAML2-DFD	AMMAML2-AMFD	MAML2-SDB	MAML2-DDB
	MAML1-IU	MAML1-OPS	MAML1-SA	MAML1-DF	DDMAML1-DFD	AMMAML1-AMFD	MAML1-SDB	MAML1-DDB
	MAMLP-IU	MAMLP-OPS	MAMLP-SA	MAMLP-DF	DDMAMLP-DFD	AMMAMLP-AMFD	MAMLP-SDB	MAMLP-DDB
EURONEXT MILAN AFF <i>(available in Level 2, Level 1 and Last Price)</i>	MAFFL2-IU	MAFFL2-OPS	MAFFL2-SA	MAFFL2-DF	DDMAFFL2-DFD	AMMAFFL2-AMFD	MAFFL2-SDB	MAFFL2-DDB
	MAFFL1-IU	MAFFL1-OPS	MAFFL1-SA	MAFFL1-DF	DDMAFFL1-DFD	AMMAFFL1-AMFD	MAFFL1-SDB	MAFFL1-DDB
	MAFFLP-IU	MAFFLP-OPS	MAFFLP-SA	MAFFLP-DF	DDMAFFLP-DFD	AMMAFFLP-AMFD	MAFFLP-SDB	MAFFLP-DDB
EURONEXT MILAN MOT <i>(available in Level 2, Level 1 and Last Price)</i>	MMOTL2-IU	MMOTL2-OPS	MMOTL2-SA	MMOTL2-DF	DDMMOTL2-DFD	AMMMOTL2-AMFD	MMOTL2-SDB	MMOTL2-DDB
	MMOTL1-IU	MMOTL1-OPS	MMOTL1-SA	MMOTL1-DF	DDMMOTL1-DFD	AMMMOTL1-AMFD	MMOTL1-SDB	MMOTL1-DDB
	MMOTLP-IU	MMOTLP-OPS	MMOTLP-SA	MMOTLP-DF	DDMMOTLP-DFD	AMMMOTLP-AMFD	MMOTLP-SDB	MMOTLP-DDB
EURONEXT MILAN DER <i>(available in Level 2, Level 1 and Last Price)</i>	MDERL2-IU	MDERL2-OPS	MDERL2-SA	MDERL2-DF	DDMDERL2-DFD	AMMDERL2-AMFD	MDERL2-SDB	MDERL2-DDB
	MDERL1-IU	MDERL1-OPS	MDERL1-SA	MDERL1-DF	DDMDERL1-DFD	AMMDERL1-AMFD	MDERL1-SDB	MDERL1-DDB
	MDERLP-IU	MDERLP-OPS	MDERLP-SA	MDERLP-DF	DDMDERLP-DFD	AMMDERLP-AMFD	MDERLP-SDB	MDERLP-DDB

¹ In relation to Euronext Milan Information Products. If you have **real time professional users** that receive Euronext Milan **snapshot** data, this need to be reported with product code **MPSB-SA** and/or **MPSP-SA**. **"Snapshot"** means the receipt of Information without any automatic update functionality, i.e., where a User must manually request an update of the Information

EURONEXT MARKET DATA INFORMATION PRODUCT	REPORTING THE PROVISION OF MANAGED NON-DISPLAY SERVICES	REPORTING THE PROVISION OF ASP SERVICES/ESP SERVICES TO TRADING MEMBERS	REPORTING THE PROVISION OF WHITE LABEL SERVICES			REPORTING THE REDISTRIBUTION OF INFORMATION TO SUB VENDORS		
	PROVISION OF MANAGED NON-DISPLAY SERVICES	PROVISION OF ASP SERVICES/ESP SERVICES TO TRADING MEMBERS	REAL TIME WHITE LABEL	DELAYED WHITE LABEL	AFTER-MIDNIGHT WHITE LABEL	REAL-TIME DATA SUB VENDOR	DELAYED DATA SUB VENDOR	AFTER-MIDNIGHT DATA SUB VENDOR
<i>Delivery Type</i>	<i>Managed Non-Display Provider Service</i>	<i>Market Connectivity Service</i>	<i>White Label Service</i>			<i>Datafeed to Sub Vendor</i>		
EURONEXT MILAN ALL MARKETS¹ <i>(available in Level 2, Level 1 and Last Price)</i>	VCMAML2-MND	TMMAML2-TM	N/A	N/A	N/A	SVMAML2-SV	SVDMAML2-S	SVAMMAML2-S
	VCMAML1-MDN	TMMAML1-TM	N/A	N/A	N/A	SVMAML1-SV	SVDMAML1-S	SVAMMAML1-S
	VCMAMLP-MND	TMMAMLP-TM	N/A	N/A	N/A	SVMAMLP-SV	SVDMAMLP-S	SVAMMAMLP-S
EURONEXT MILAN AFF <i>(available in Level 2, Level 1 and Last Price)</i>	VCMAFFL2-MND	TMAFFL2-TM	MAFFL2-WL	MAFFL2-DWL	MAFFL2-AMWL	SVMAFFL2-SV	SVDMAFFL2-S	SVAMMAFFL2-S
	VCMAFFL1-MND	TMAFFL1-TM	MAFFL1-WL	MAFFL1-DWL	MAFFL1-AMWL	SVMAFFL1-SV	SVDMAFFL1-S	SVAMMAFFL1-S
	VCMAFFLP-MND	TMAFFLP-TM	MAFFLP-WL	MAFFLP-DWL	MAFFLP-AMWL	SVMAFFLP-SV	SVDMAFFLP-S	SVAMMAFFLP-S
EURONEXT MILAN MOT <i>(available in Level 2, Level 1 and Last Price)</i>	VCMMOTL2-MND	TMMMOTL2-TM	MMOTL2-WL	MMOTL2-DWL	MMOTL2-AMWL	SVMMOTL2-SV	SVDMMOTL2-S	SVAMMMOTL2-S
	VCMMOTL1-MND	TMMMOTL1-TM	MMOTL1-WL	MMOTL1-DWL	MMOTL1-AMWL	SVMMOTL1-SV	SVDMMOTL1-S	SVAMMMOTL1-S
	VCMMOTLP-MND	TMMMOTLP-TM	MMOTLP-WL	MMOTLP-DWL	MMOTLP-AMWL	SVMMOTLP-SV	SVDMMOTLP-S	SVAMMMOTLP-S
EURONEXT MILAN DER <i>(available in Level 2, Level 1 and Last Price)</i>	VCMDERL2-MND	TMMDERL2-TM	MDERL2-WL	MDERL2-DWL	MDERL2-AMWL	SVMDERL2-SV	SVDMDERL2-S	SVAMMDERL2-S
	VCMDERL1-MDN	TMMDERL1-TM	MDERL1-WL	MDERL1-DWL	MDERL1-AMWL	SVMDERL1-SV	SVDMDERL1-S	SVAMMDERL1-S
	VCMDERLP-MND	TMMDERLP-TM	MDERLP-WL	MDERLP-DWL	MDERLP-AMWL	SVMDERLP-SV	SVDMDERLP-S	SVAMMDERLP-S

¹ In relation to Euronext Milan Information Products. If you have **real time professional users** that receive Euronext Milan **snapshot** data, this need to be reported with product code **MPSB-SA** and/or **MPSP-SA**. "**Snapshot**" means the receipt of Information without any automatic update functionality, i.e., where a User must manually request an update of the Information.

EURONEXT MARKET DATA INFORMATION PRODUCT	REPORTING YOUR INTERNAL USE OF INFORMATION		REPORTING YOUR SUBSCRIBER'S USE OF INFORMATION				REPORTING SUBSCRIBERS APPROVED TO REPORT NATURAL USER	
	INTERNAL USE	OPERATIONAL USE	REAL-TIME INFORMATION SUPPLIER-CONTROLLED DATA	REAL-TIME RECIPIENT-CONTROLLED DATA	DELAYED RECIPIENT-CONTROLLED DATA	AFTER-MIDNIGHT RECIPIENT-CONTROLLED DATA	REAL-TIME INFORMATION SUPPLIER-CONTROLLED DATA	REAL-TIME RECIPIENT-CONTROLLED DATA
<i>Delivery Type</i>	<i>Internal Other Use</i>	<i>Operational Use</i>	<i>Supplier-Controlled Professional</i>	<i>Datafeed to End Customer</i>			<i>Supplier-Controlled Professional</i>	<i>Datafeed to End Customer</i>
TRADING AFTER HOURS MARKET <i>(available in Level 2, Level 1 and Last Price)</i>	TAHL2-IU TAHL1-IU TAHLP-IU	TAHL2-OPS TAHL1-OPS TAHLP-OPS	TAHL2-SA TAHL1-SA TAHLP-SA	TAHL2-DF TAHL1-DF TAHLP-DF	DDTAHL2-DFD DDTAHL1-DFD DDTAHLP-DFD	AMTAHL2-AMFD AMTAHL1-AMFD AMTAHLP-AMFD	TAHL2-SDB TAHL1-SDB TAHLP-SDB	TAHL2-DDB TAHL1-DDB TAHLP-DDB
GLOBAL EQUITY MARKET <i>(available in Level 2, Level 1 and Last Price)</i>	GEML2-IU GEML1-IU GEMLP-IU	GEML2-OPS GEML1-OPS GEMLP-OPS	GEML2-SA GEML1-SA GEMLP-SA	GEML2-DF GEML1-DF GEMLP-DF	DDGEML2-DFD DDGEML1-DFD DDGEMLP-DFD	AMMAFFL2-AMFD AMMAFFL1-AMFD AMMAFFLP-AMFD	GEML2-SDB GEML1-SDB GEMLP-SDB	GEML2-DDB GEML1-DDB GEMLP-DDB
EURONEXT GROUP FIXED INCOME <i>(available in Level 2 and Last Price)</i>	EGFIL2-IU EGFITLP-IU	EGFIL2-OPS EGFILP-OPS	EGFIL2-SA EGFILP-SA	EGFIL2-DF EGFILP-DF	EGFIL2-DFD EGFILP-DFD	EGFIL2-AMFD EGFILP-AMFD	EGFIL2-SDB EGFILP-SDB	EGFIL2-DDB EGFILP-DDB

EURONEXT MARKET DATA INFORMATION PRODUCT	REPORTING THE PROVISION OF MANAGED NON-DISPLAY SERVICES	REPORTING THE PROVISION OF ASP SERVICES/ESP SERVICES TO TRADING MEMBERS	REPORTING THE PROVISION OF WHITE LABEL SERVICES			REPORTING THE REDISTRIBUTION OF INFORMATION TO SUB VENDORS		
	PROVISION OF MANAGED NON-DISPLAY SERVICES	PROVISION OF ASP SERVICES/ESP SERVICES TO TRADING MEMBERS	REAL TIME WHITE LABEL	DELAYED WHITE LABEL	AFTER-MIDNIGHT WHITE LABEL	REAL-TIME DATA SUB VENDOR	DELAYED DATA SUB VENDOR	AFTER-MIDNIGHT DATA SUB VENDOR
<i>Delivery Type</i>	<i>Managed Non-Display Provider Service</i>	<i>Market Connectivity Service</i>	<i>White Label Service</i>			<i>Datafeed to Sub Vendor</i>		
TRADING AFTER HOURS MARKET <i>(available in Level 2, Level 1 and Last Price)</i>	VCTAHL2-MND VCTAHL1-MDN VCTAHL2-MND	TMTAHL2-TM TMTAHL1-TM TMTAHL2-TM	TAHL2-WL TAHL1-WL TAHL2-WL	TAHL2-DWL TAHL1-DWL TAHL2-DWL	TAHL2-AMWL TAHL1-AMWL TAHL2-AMWL	SVTAHL2-SV SVTAHL1-SV SVTAHL2-SV	SVDTAHL2-S SVDTAHL1-S SVDTAHL2-S	SVAMTAHL2-S SVAMTAHL1-S SVAMTAHL2-S
GLOBAL EQUITY MARKET <i>(available in Level 2, Level 1 and Last Price)</i>	VCGEML2-MND VCGEML1-MND VCGEML2-MND	TMGEML2-TM TMGEML1-TM TMGEML2-TM	GEML2-WL GEML1-WL GEML2-WL	GEML2-DWL GEML1-DWL GEML2-DWL	GEML2-AMWL GEML1-AMWL GEML2-AMWL	SVGEML2-SV SVGEML1-SV SVGEML2-SV	SVDGEML2-S SVDGEML1-S SVDGEML2-S	SVAMGEML2-S SVAMGEML1-S SVAMGEML2-S
EURONEXT GROUP FIXED INCOME <i>(available in Level 2 and Last Price)</i>	VCEGFIL2-MND VCEGFIL2-MND	TMEGFIL2-TM TMEGFIL2-TM	EGFIL2-WL EGFIL2-WL	EGFIL2-DWL EGFIL2-DWL	EGFIL2-AMWL EGFIL2-AMWL	SVEGFIL2-SV SVEGFIL2-SV	SVDEGFIL2-S SVDEGFIL2-S	SVAMEGFIL2-S SVAMEGFIL2-S

EURONEXT MARKET DATA INFORMATION PRODUCT	REPORTING YOUR INTERNAL USE OF INFORMATION		REPORTING YOUR SUBSCRIBER'S USE OF INFORMATION				REPORTING SUBSCRIBERS APPROVED TO REPORT NATURAL USER	
	INTERNAL USE	OPERATIONAL USE	REAL-TIME INFORMATION SUPPLIER-CONTROLLED DATA	REAL-TIME RECIPIENT-CONTROLLED DATA	DELAYED RECIPIENT-CONTROLLED DATA	AFTER-MIDNIGHT RECIPIENT-CONTROLLED DATA	REAL-TIME INFORMATION SUPPLIER-CONTROLLED DATA	REAL-TIME RECIPIENT-CONTROLLED DATA
<i>Delivery Type</i>	<i>Internal Other Use</i>	<i>Operational Use</i>	<i>Supplier- Controlled Professional</i>	<i>Datafeed to End Customer</i>			<i>Supplier- Controlled Professional</i>	<i>Datafeed to End Customer</i>
EUROTLX ALL MARKETS <i>(available in Level 2, Level 1 and Last Price)</i>	TLXAL2-IU TLXAL1-IU TLXALP-IU	TLXAL2-OPS TLXAL1-OPS TLXALP-OPS	TLXAL2-SA TLXAL1-SA TLXALP-SA	TLXAL2-DF TLXAL1-DF TLXALP-DF	TLXAL2-DFD TLXAL1-DFD TLXALP-DFD	TLXAL2-AMFD TLXAL1-AMFD TLXALP-AMFD	TLXAL2-SDB TLXAL1-SDB TLXALP-SDB	TLXAL2-DDB TLXAL1-DDB TLXALP-DDB
EUROTLX SHARES AND DRs <i>(available in Level 2, Level 1 and Last Price)</i>	TLXEL2-IU TLXEL1-IU TLXELP-IU	TLXEL2-OPS TLXEL1-OPS TLXELP-OPS	TLXEL2-SA TLXEL1-SA TLXELP-SA	TLXEL2-DF TLXEL1-DF TLXELP-DF	N/A N/A N/A	N/A N/A N/A	TLXEL2-SDB TLXEL1-SDB TLXELP-SDB	TLXEL2-DDB TLXEL1-DDB TLXELP-DDB
EUROTLX BONDS <i>(available in Level 2 and Last Price)</i>	TLXBL2-IU TLXBL1-IU TLXBLLP-IU	TLXBL2-OPS TLXBL1-OPS TLXBLLP-OPS	TLXBL2-SA TLXBL1-SA TLXBLLP-SA	TLXBL2-DF TLXBL1-DF TLXBLLP-DF	N/A N/A N/A	N/A N/A N/A	TLXBL2-SDB TLXBL1-SDB TLXBLLP-SDB	TLXBL2-DDB TLXBL1-DDB TLXBLLP-DDB
EUROTLX CERTIFICATES <i>(available in Level 2, Level 1 and Last Price)</i>	TLXCL2-IU TLXCL1-IU TLXCLP-IU	TLXCL2-OPS TLXCL1-OPS TLXCLP-OPS	TLXCL2-SA TLXCL1-SA TLXCLP-SA	TLXCL2-DF TLXCL1-DF TLXCLP-DF	N/A N/A N/A	N/A N/A N/A	TLXCL2-SDB TLXCL1-SDB TLXCLP-SDB	TLXCL2-DDB TLXCL1-DDB TLXCLP-DDB

EURONEXT MARKET DATA INFORMATION PRODUCT	REPORTING THE PROVISION OF MANAGED NON-DISPLAY SERVICES	REPORTING THE PROVISION OF ASP SERVICES/ESP SERVICES TO TRADING MEMBERS	REPORTING THE PROVISION OF WHITE LABEL SERVICES			REPORTING THE REDISTRIBUTION OF INFORMATION TO SUB VENDORS		
	PROVISION OF MANAGED NON-DISPLAY SERVICES	PROVISION OF ASP SERVICES/ESP SERVICES TO TRADING MEMBERS	REAL-TIME WHITE LABEL	DELAYED WHITE LABEL	AFTER-MIDNIGHT WHITE LABEL	REAL-TIME DATA SUB VENDOR	DELAYED DATA SUB VENDOR	AFTER-MIDNIGHT DATA SUB VENDOR
<i>Delivery Type</i>	<i>Managed Non-Display Provider Service</i>	<i>Market Connectivity Service</i>	<i>White Label Service</i>			<i>Datafeed to Sub Vendor</i>		
EUROTLX ALL MARKETS <i>(available in Level 2, Level 1 and Last Price)</i>	VCTLXAL2-MND VCTLXAL1-MND VCTLXALP-MND	TMTLXAL2-TM TMTLXAL1-TM TMTLXALP-TM	TLXAL2-WL TLXAL1-WL TLXALP-WL	TLXAL2-DWL TLXAL1-DWL TLXALP-DWL	TLXAL2-AMWL TLXAL1-AMWL TLXALPAMWL	SVTLXAL2-SV SVTLXAL1-SV SVTLXALP-SV	SVDTLXAL2-S SVDTLXAL1-S SVDTLXALP-S	SVAMTLXAL2-S SVAMTLXAL1-S SVAMTLXALP-S
EUROTLX SHARES AND DRs <i>(available in Level 2, Level 1 and Last Price)</i>	VCTLXEL2-MND VCTLXEL1-MND VCTLXELP-MND	TMTLXEL2-TM TMTLXEL1-TM TMTLXELP-TM	N/A N/A N/A	N/A N/A N/A	N/A N/A N/A	N/A N/A N/A	N/A N/A N/A	N/A N/A N/A
EUROTLX BONDS <i>(available in Level 2, Level 1 and Last Price)</i>	VCTLXBL2-MND VCTLXBL1-MND VCTLXBLLP-MND	TMTLXBL2-TM TMTLXBL1-TM TMTLXBLLP-TM	N/A N/A N/A	N/A N/A N/A	N/A N/A N/A	N/A N/A N/A	N/A N/A N/A	N/A N/A N/A
EUROTLX CERTIFICATES <i>(available in Level 2, Level 1 and Last Price)</i>	VCTLXCL2-MND VCTLXCL1-MND VCTLXCLP-MND	TMTLXCL2-TM TMTLXCL1-TM TMTLXCLP-TM	N/A N/A N/A	N/A N/A N/A	N/A N/A N/A	N/A N/A N/A	N/A N/A N/A	N/A N/A N/A

EURONEXT MARKET DATA PRODUCT	REPORTING YOUR NON-PROFESSIONAL SUBSCRIBER'S USE OF INFORMATION	DELIVERY TYPE
NON-PROFESSIONAL SUBSCRIBER PREMIUM	ENPI-SA	Redistributor-Controlled Non-Professional Premium
NON-PROFESSIONAL SUBSCRIBER BASIC	ENPIB-SA	Redistributor-Controlled Non-Professional Basic
NON-PROFESSIONAL SUBSCRIBER WARRANTS AND CERTIFICATES	ENPIWC-SA	Redistributor-Controlled Non-Professional
EURONEXT PAGE VIEW REQUEST	EPVR-MU	Quote Service
EURONEXT MILAN NON-PROFESSIONAL <i>(available in Level 2 and Level 1)</i>	MNPL2-SA MNPL1-SA	Redistributor-Controlled Non-Professional
EUROTLX NON-PROFESSIONAL <i>(available in Level 2 and Level 1)</i>	TLXNPL2-SA TLXNPL1-SA	Redistributor-Controlled Non-Professional
MESSAGES/EMAILS/ALERTS	SMS1 SMS2	Messages/Emails/Alerts
VOICE SERVICES	VOICE	Voice services per minute

APPENDIX 4: EURONEXT MARKET DATA PRODUCTS & PRODUCTS CODES (TRADING MEMBER)

The tables below provide more information about Euronext Market Data Products applicable under the Euronext Market Data Agreement. The product codes described are the product codes either recommended or required by Euronext.

EURONEXT MARKET DATA INFORMATION PRODUCT	MARKET DATA PRODUCT CODE	TYPE OF DATA	OPTIQ MARKET DATA CHANNEL	CHANNEL SPEED		
EURONEXT ALL INDICES	EAI-IU	REFI	ID 13 - Euronext Indices	100 MB		
	EAI-OPS	REFI	ID 14 - Euronext iNAVs	100 MB		
		REFI	ID 15 - Euronext Dublin Indices	100 MB		
EURONEXT CONTINENTAL CASH (CONSOLIDATED PACK) <i>(available in Level 2, Level 1 and Last Price)</i> <i>*The Market Data Product Codes ECB10-IU, ECB10-OPS, ECB1-IU and ECB1-OPS are mapped to the same Euronext Datacentre products.</i>	ECB10-IU* ECB10-OPS* ECB1-IU* ECB1-OPS*	FBMU	ID 7 - Equities Belgium (including Public Auction Market)	100 MB	1 GB	
		FBOU	ID 7 - Equities Belgium (including Public Auction Market)	100 MB	1 GB	
		FBMU	ID 8 - Equities Portugal	100 MB	1 GB	
		FBOU	ID 8 - Equities Portugal	100 MB	1 GB	
		FBMU	ID 5 - Equities France	100 MB	1 GB	
		FBOU	ID 5 - Equities France	100 MB	1 GB	10 GB
		FBMU	ID 6 - Equities Netherlands	100 MB	1GB	
		FBOU	ID 6 - Equities Netherlands	100 MB	1 GB	10 GB
		FBMU	ID 1 - Funds	100 MB	1 GB	
		FBOU	ID 1 - Funds	100 MB	1 GB	10 GB
		FBMU	ID 32 - ETF Access	100 MB	1 GB	
		FBOU	ID 32 - ETF Access	100 MB	1 GB	10 GB
		FBMU	ID 2 - Fixed Income	100 MB	1 GB	

EURONEXT MARKET DATA INFORMATION PRODUCT	MARKET DATA PRODUCT CODE	TYPE OF DATA	OPTIQ MARKET DATA CHANNEL	CHANNEL SPEED		
<p>EURONEXT CONTINENTAL CASH (CONSOLIDATED PACK)</p> <p><i>(available in Level 2, Level 1 and Last Price)</i></p> <p><i>*The Market Data Product Codes ECB10-IU, ECB10-OPS, ECB1-IU and ECB1-OPS are mapped to the same Euronext Datacentre products. These products also include the Market Data Channels mapped to the Last Price product codes ECLP-IU and ECLP-OPS.</i></p> <p><i>**The Market Data Product Codes ECLP-IU and ECLP-OPS are mapped to the same Euronext Datacentre products.</i></p>	ECB10-IU*	FBOU	ID 2 - Fixed Income	100 MB	1 GB	
	ECB10-OPS*	BBBO	ID 4 - Warrants & Certificates	100 MB	1 GB	
	ECB1-IU*	FBMU	ID 4 - Warrants & Certificates	100 MB	1 GB	
	ECB1-OPS*	FBMU	ID 11 - Best of Book (RMF)	100 MB	1 GB	
		FBMU	ID 31 - Best of Book (RMF) Funds	100 MB	1 GB	
		REFT	ID 7 - Equities Belgium (including Public Auction Market)	100 MB		
		REFT	ID 8 - Equities Portugal	100 MB		
		REFT	ID 5 - Equities France	100 MB		
		REFT	ID 6 - Equities Netherlands	100 MB		
		REFT	ID 1 - Funds	100 MB		
		REFT	ID 32 - ETF Access	100 MB		
		REFT	ID 2 - Fixed Income	100 MB		
		REFT	ID 4 - Warrants & Certificates	100 MB		
	<p>EURONEXT CONTINENTAL EQUITIES</p> <p><i>(available in Level 2, Level 1 and Last Price)</i></p> <p><i>The Level 2 products also include the Market Data Channels mapped to the Last Price product codes.</i></p>	EQTL2-IU	FBMU	ID 7 - Equities Belgium (including Public Auction Market)	100 MB	1 GB
FBOU			ID 7 - Equities Belgium (including Public Auction Market)	100 MB	1 GB	
FBMU			ID 8 - Equities Portugal	100 MB	1 GB	
EQTL2-OPS		FBOU	ID 8 - Equities Portugal	100 MB	1 GB	
		FBMU	ID 5 - Equities France	100 MB	1 GB	
		FBOU	ID 5 - Equities France	100 MB	1GB	10 GB

EURONEXT MARKET DATA INFORMATION PRODUCT	MARKET DATA PRODUCT CODE	TYPE OF DATA	OPTIQ MARKET DATA CHANNEL	CHANNEL SPEED			
EURONEXT CONTINENTAL EQUITIES <i>(available in Level 2 and Last Price)</i> <i>The Level 2 products also include the Market Data Channels mapped to the Last Price product codes.</i>	EQTL2-IU	FBMU	ID 6 - Equities Netherlands	100 MB		1 GB	
	EQTL2-OPS	FBOU	ID 6 - Equities Netherlands	100 MB	1 GB	10 GB	
	EQTLP-IU	EQTLP-OPS	REFT	ID 7 - Equities Belgium (including Public Auction Market)	100 MB		
			REFT	ID 8 - Equities Portugal	100 MB		
			REFT	ID 5 - Equities France	100 MB		
			REFT	ID 6 - Equities Netherlands	100 MB		
	EURONEXT DUBLIN EQUITIES <i>(available in Level 2 and Last Price)</i> <i>The Level 2 products also include the Market Data Channels mapped to the Last Price product codes.</i>	DEQL2-IU	FBMU	ID 9 - Equities Dublin	100 MB		1 GB
DEQL2-OPS		FBOU	ID 9 - Equities Dublin	100 MB		1 GB	
DEQLP-IU		DEQLP-OPS	REFT	ID 9 - Equities Dublin	100 MB		
OSLO BØRS EQUITIES <i>(available in Level 2 and Last Price)</i> <i>The Level 2 products also include the Market Data Channels mapped to the Last Price product codes.</i>	OEQL2-IU	FBMU	ID 10 - Equities Norway	100 MB		1 GB	
	OEQL2-OPS	FBOU	ID 10 - Equities Norway	100 MB		1 GB	
	OEQLP-IU	OEQLP-OPS	REFT	ID 10 - Equities Norway	100 MB		
EURONEXT BEST OF BOOK <i>(available in Level 2)</i>	RMFQ-IU	FBMU	ID 11 - Best of Book (RMF)	100 MB		1 GB	
	RMFQ-OPS	FBMU	ID 31 - Best of Book (RMF) Funds	100 MB		1 GB	
EURONEXT BLOCK <i>(available in Last Price)</i>	EBT-IU	EBLK	ID 33 - Euronext Block	100 MB			
	EBT-OPS						

EURONEXT MARKET DATA INFORMATION PRODUCT	MARKET DATA PRODUCT CODE	TYPE OF DATA	OPTIQ MARKET DATA CHANNEL	CHANNEL SPEED		
EURONEXT ETFs AND FUNDS <i>(available in Level 2 and Last Price)</i> <i>The Level 2 products also include the Market Data Channels mapped to the Last Price product codes.</i>	ETFL2-IU ETFL2-OPS	FBMU	ID 1 - Funds	100 MB	1 GB	
		FBOU	ID 1 - Funds	100 MB	1 GB	10 GB
		FBMU	ID 32 - ETF Access	100 MB	1 GB	
		FBOU	ID 32 - ETF Access	100 MB	1 GB	10 GB
	ETFLP-IU	REFT	ID 1 - Funds	100 MB		
	ETFLP-OPS	REFT	ID 32 - ETF Access	100 MB		
EURONEXT WARRANTS AND CERTIFICATES <i>(available in Level 2 and Last Price)</i> <i>The Level 2 products also include the Market Data Channels mapped to the Last Price product codes.</i>	EWCL2-IU	BBBO	ID 4 - Warrants & Certificates	100 MB	1 GB	
	EWCL2-OPS	FBMU	ID 4 - Warrants & Certificates	100 MB	1 GB	
	EWCLP-IU EWCLP-OPS	REFT	ID 4 - Warrants & Certificates	100 MB		
EURONEXT FIXED INCOME <i>(available in Level 2 and Last Price)</i> <i>The Level 2 products also include the Market Data Channels mapped to the Last Price product codes.</i>	EFIL2-IU	FBMU	ID 2 - Fixed Income	100 MB	1 GB	
	EFIL2-OPS	FBOU	ID 2 - Fixed Income	100 MB	1 GB	
	EFILP-IU	REFT	ID 2 - Fixed Income	100 MB		
	EFILP-OPS					
NORDIC ABM <i>(available in Last Price)</i>	ABM-IU					
	ABM-OPS	REFT	ID 12 - Fixed Income Nordic ABM	100 MB		

EURONEXT MARKET DATA INFORMATION PRODUCT	MARKET DATA PRODUCT CODE	TYPE OF DATA	OPTIQ MARKET DATA CHANNEL	CHANNEL SPEED	
<p>EURONEXT EQUITY AND INDEX DERIVATIVES</p> <p><i>(available in Level 2 and Last Price)</i></p> <p><i>The Level 2 products also include the Market Data Channels mapped to the Last Price product codes.</i></p>	EQID-IU EQID-OPS	BBBO	ID 20 - Equity Derivatives France	100 MB	1 GB
		FBMU	ID 20 - Equity Derivatives France	1 GB	
		BBBO	ID 21 - Equity Derivatives Netherlands	100 MB	1 GB
		FBMU	ID 21 - Equity Derivatives Netherlands	1 GB	
		BBBO	ID 22 - Equity Derivatives Belgium, Norway & Portugal	100 MB	1 GB
		FBMU	ID 22 - Equity Derivatives Belgium, Norway & Portugal	1 GB	
		BBBO	ID 26 - Index Futures France	100M B	1 GB
		FBMU	ID 26 - Index Futures France	1 GB	10 GB
		BBBO	ID 27 - Index Futures Netherlands	100 MB	1 GB
		FBMU	ID 27 - Index Futures Netherlands	1 GB	10 GB
		BBBO	ID 23 - Index Options France	100 MB	1 GB
		FBMU	ID 23 - Index Options France	1 GB	10 GB
		BBBO	ID 24 - Index Options Netherlands	100 MB	1 GB
		FBMU	ID 24 - Index Options Netherlands	1 GB	10 GB
	BBBO	ID 25 - Index Derivatives Belgium, Norway & Portugal	100 MB	1 GB	
	FBMU	ID 25 - Index Derivatives Belgium, Norway & Portugal	1 GB		
	EQIDL-IU EQIDL-OPS	REFT	ID 20 - Equity Derivatives France	100 MB	
		REFT	ID 21 - Equity Derivatives Netherlands	100 MB	
REFT		ID 22 - Equity Derivatives Belgium, Norway & Portugal	100 MB		

EURONEXT MARKET DATA INFORMATION PRODUCT	MARKET DATA PRODUCT CODE	TYPE OF DATA	OPTIQ MARKET DATA CHANNEL	CHANNEL SPEED	
EURONEXT EQUITY AND INDEX DERIVATIVES <i>(available in Level 2 and Last Price)</i>	EQIDLPIU EQIDLPOPS	REFT	ID 26 - Index Futures France	100 MB	
		REFT	ID 27 Index Futures Netherlands	100 MB	
		REFT	ID 23 - Index Options France	100 MB	
		REFT	ID 24 - Index Options Netherlands	100 MB	
		REFT	ID 25 - Index Derivatives Belgium, Norway & Portugal	100 MB	
EURONEXT COMMODITY DERIVATIVES <i>(available in Level 2 and Last Price)</i> <i>The Level 2 products also include the Market Data Channels mapped to the Last Price product codes.</i>	COMDIU	BBBO	ID 16 - Commodity Derivatives	100 MB	1 GB
	COMDOPS	FBMU	ID 16 - Commodity Derivatives	1 GB	
	COMDLP-IU COMDLP-OPS	REFT	ID 16 - Commodity Derivatives	100 MB	
VINX ALL	VINXA-IU	N/A	N/A	N/A	
VINX PLUS	VINXP-IU	N/A	N/A	N/A	
	VINXP-OPS	N/A	N/A	N/A	

EURONEXT MARKET DATA INFORMATION PRODUCT	MARKET DATA PRODUCT CODE	TYPE OF DATA	OPTIQ MARKET DATA CHANNEL	CHANNEL SPEED			
<p>EURONEXT MILAN ALL MARKETS (available in Level 2, Level 1 and Last Price) The Level 2 products also include the Market Data Channels mapped to the Level 1 and Last Price product codes.</p>	MAML2-IU	BBBO	ID 18 – Equities Italy	100 MB	1 GB		
		FBMU	ID 18 – Equities Italy	100 MB	1 GB		
		FBOU	ID 18 – Equities Italy	100 MB	1 GB	10 GB	
		MBO	ID 18 – Equities Italy MDG Lite Multicast	100 MB			
		MBP	ID 18 – Equities Italy MDG Lite Multicast	100 MB			
		FOBU	ID 18 – Equities Italy MDG Lite Unicast	100 MB			
		BBOU	ID 18 – Equities Italy MDG Lite Unicast	100 MB			
		MPSU	ID 18 – Equities Italy MDG Lite Unicast	100 MB			
		MOSU	ID 18 – Equities Italy MDG Lite Unicast	100 MB			
		MAML2-OPS	BBBO	ID 39 – Funds ETF Italy	100 MB	1 GB	
	FBMU		ID 39 – Funds ETF Italy	100 MB	1 GB		
	FBOU		ID 39 – Funds ETF Italy	1 GB	10 GB		
	MBO		ID 39 – Funds ETF Italy MDG Lite Multicast	100 MB			
	MBP		ID 39 – Funds ETF Italy MDG Lite Multicast	100 MB			
	FOBU		ID 39 – Funds ETF Italy MDG Lite Unicast	100 MB			
	BBOU		ID 39 – Funds ETF Italy MDG Lite Unicast	100 MB			
	MPSU		ID 39 – Funds ETF Italy MDG Lite Unicast	100 MB			
	MOSU		ID 39 – Funds ETF Italy MDG Lite Unicast	100 MB			

EURONEXT MARKET DATA INFORMATION PRODUCT	MARKET DATA PRODUCT CODE	TYPE OF DATA	OPTIQ MARKET DATA CHANNEL	CHANNEL SPEED	
<p>EURONEXT MILAN ALL MARKETS (available in Level 2, Level 1 and Last Price) The Level 2 products also include the Market Data Channels mapped to the Level 1 and Last Price product codes.</p>	<p>MAML2-IU MAML2-OPS</p>	BBBO	ID 41 – Warrants & Certificates Italy (SEDEX)	100 MB	1 GB
		FBMU	ID 41 – Warrants & Certificates Italy (SEDEX)	1 GB	
		MBP	ID 41 – Warrants & Certificates Italy (SEDEX) MDG Lite Multicast	100 MB	
		BBOU	ID 41 – Warrants & Certificates Italy (SEDEX) MDG Lite Unicast	100 MB	
		MPSU	ID 41 – Warrants & Certificates Italy (SEDEX) MDG Lite Unicast	100 MB	
		BBBO	ID 40 – Fixed Income Italy (MOT/ExtraMOT)	100 MB	1 GB
		FBMU	ID 40 – Fixed Income Italy (MOT/ExtraMOT)	100 MB	1 GB
		FBOU	ID 40 – Fixed Income Italy (MOT/ExtraMOT)	100 MB	1 GB
		MBO	ID 40 – Fixed Income Italy (MOT/ExtraMOT) MDG Lite Multicast	100 MB	
		MBP	ID 40 – Fixed Income Italy (MOT/ExtraMOT) MDG Lite Multicast	100 MB	
		FOBU	ID 40 – Fixed Income Italy (MOT/ExtraMOT) MDG Lite Unicast	100 MB	
		BBOU	ID 40 – Fixed Income Italy (MOT/ExtraMOT) MDG Lite Unicast	100 MB	
		MPSU	ID 40 – Fixed Income Italy (MOT/ExtraMOT) MDG Lite Unicast	100 MB	
		MOSU	ID 40 – Fixed Income Italy (MOT/ExtraMOT) MDG Lite Unicast	100 MB	
		BBBO	ID 36 – Equity Derivatives Italy	100 MB	1 GB
		FBMU	ID 36 – Equity Derivatives Italy	1 GB	
		FOBU	ID 36 – Equity Derivatives Italy MDG Lite Unicast	100 MB	

EURONEXT MARKET DATA INFORMATION PRODUCT	MARKET DATA PRODUCT CODE	TYPE OF DATA	OPTIQ MARKET DATA CHANNEL	CHANNEL SPEED	
<p>EURONEXT MILAN ALL MARKETS (available in Level 2, Level 1 and Last Price) The Level 2 products also include the Market Data Channels mapped to the Level 1 and Last Price product codes.</p>	<p>MAML2-IU MAML2-OPS</p>	BBOU	ID 36 – Equity Derivatives Italy MDG Lite Unicast	100 MB	
		MPSU	ID 36 – Equity Derivatives Italy MDG Lite Unicast	100 MB	
		BBBO	ID 37 – Index Options Italy	100 MB	1 GB
		FBMU	ID 37 – Index Options Italy	1 GB	10 GB
		MBP	ID 37 – Index Options Italy MDG Lite Multicast	100 MB	
		FOBU	ID 37 – Index Options Italy MDG Lite Unicast	100 MB	
		BBOU	ID 37 – Index Options Italy MDG Lite Unicast	100 MB	
		MPSU	ID 37 – Index Options Italy MDG Lite Unicast	100 MB	
		BBBO	ID 28 – Index Futures Italy	100 MB	1 GB
		FBMU	ID 28 – Index Futures Italy	1 GB	10 GB
		MBP	ID 28 – Index Futures Italy MDG Lite Multicast	100 MB	
		FOBU	ID 28 – Index Futures Italy MDG Lite Unicast	100 MB	
		BBOU	ID 28 – Index Futures Italy MDG Lite Unicast	100 MB	
		MPSU	ID 28 – Index Futures Italy MDG Lite Unicast	100 MB	

EURONEXT MARKET DATA INFORMATION PRODUCT	MARKET DATA PRODUCT CODE	TYPE OF DATA	OPTIQ MARKET DATA CHANNEL	CHANNEL SPEED	
<p>EURONEXT MILAN ALL MARKETS <i>(available in Level 2, Level 1 and Last Price)</i></p> <p><i>The Level 2 products also include the Market Data Channels mapped to the Level 1 and Last Price product codes</i></p>	MAML2-IU	BBBO	ID 19 – Trading After Hours Italy	100 MB	1 GB
		FBMU	ID 19 – Trading After Hours Italy	100 MB	1 GB
		FBOU	ID 19 – Trading After Hours Italy	100 MB	1 GB
		MBO	ID 19 – Trading After Hours Italy MDG Lite Multicast	100 MB	
		MBP	ID 19 – Trading After Hours Italy MDG Lite Multicast	100 MB	
		FOBU	ID 19 – Trading After Hours Italy MDG Lite Unicast	100 MB	
		BBOU	ID 19 – Trading After Hours Italy MDG Lite Unicast	100 MB	
		MPSU	ID 19 – Trading After Hours Italy MDG Lite Unicast	100 MB	
		MOSU	ID 19 – Trading After Hours Italy MDG Lite Unicast	100 MB	
		MAML2-OPS	BBBO	ID 45 – Global Equity Market	100 MB
	FBMU		ID 45 – Global Equity Market	100 MB	1 GB
	FBOU		ID 45 – Global Equity Market	100 MB	1 GB
	MBO		ID 45 – Global Equity Market MDG Lite Multicast	100 MB	
	MBP		ID 45 – Global Equity Market MDG Lite Multicast	100 MB	
	FOBU		ID 45 – Global Equity Market MDG Lite Unicast	100 MB	
	BBOU		ID 45 – Global Equity Market MDG Lite Unicast	100 MB	
	MPSU		ID 45 – Global Equity Market MDG Lite Unicast	100 MB	
	MOSU		ID 45 – Global Equity Market MDG Lite Unicast	100 MB	

EURONEXT MARKET DATA INFORMATION PRODUCT	MARKET DATA PRODUCT CODE	TYPE OF DATA	OPTIQ MARKET DATA CHANNEL	CHANNEL SPEED	
<p>EURONEXT MILAN ALL MARKETS (available in Level 2, Level 1 and Last Price) The Level 1 products also include the Market Data Channels mapped to the Last Price product codes.</p>	<p>MAML1-IU MAML1-OPS</p>	BBBO	ID 18 – Equities Italy	100 MB	1 GB
		BBOU	ID 18 – Equities Italy MDG Lite Unicast	100 MB	
		BBBO	ID 39 – Funds ETF Italy	100 MB	1 GB
		BBOU	ID 39 – Funds ETF Italy MDG Lite Unicast	100 MB	
		BBBO	ID 41 – Warrants & Certificates Italy (SEDEX)	100 MB	1 GB
		BBOU	ID 41 – Warrants & Certificates Italy (SEDEX) MDG Lite Unicast	100 MB	
		BBBO	ID 40 – Fixed Income Italy (MOT/ExtraMOT)	100 MB	1 GB
		BBOU	ID 40 – Fixed Income Italy (MOT/ExtraMOT) MDG Lite Unicast	100 MB	
		BBBO	ID 36 – Equity Derivatives Italy	100 MB	1 GB
		BBOU	ID 36 – Equity Derivatives Italy MDG Lite Unicast	100 MB	
		BBBO	ID 37 – Index Options Italy	100 MB	1 GB
		BBOU	ID 37 – Index Options Italy MDG Lite Unicast	100 MB	
		BBBO	ID 28 – Index Futures Italy	100 MB	1 GB
		BBOU	ID 28 – Index Futures Italy MDG Lite Unicast	100 MB	
		BBBO	ID 19 – Trading After Hours Italy	100 MB	1 GB
		BBOU	ID 19 – Trading After Hours Italy MDG Lite Unicast	100 MB	
		BBBO	ID 45 – Global Equity Market	100 MB	1 GB
		BBOU	ID 45 – Global Equity Market MDG Lite Unicast	100 MB	

EURONEXT MARKET DATA INFORMATION PRODUCT	MARKET DATA PRODUCT CODE	TYPE OF DATA	OPTIQ MARKET DATA CHANNEL	CHANNEL SPEED
EURONEXT MILAN ALL MARKETS <i>(available in Level 2, Level 1 and Last Price)</i>	MAMLP-IU MAMLP-OPS	REFT	ID 18 – Equities Italy	100 MB
		RD	ID 18 – Equities Italy MDG Lite Unicast	100 MB
		FTIS	ID 18 – Equities Italy MDG Lite Unicast	100 MB
		REFT	ID 39 – Funds ETF Italy	100 MB
		RD	ID 39 – Funds ETF Italy MDG Lite Unicast	100 MB
		FTIS	ID 39 – Funds ETF Italy MDG Lite Unicast	100 MB
		REFT	ID 41 – Warrants & Certificates Italy (SEDEX)	100 MB
		RD	ID 41 – Warrants & Certificates Italy (SEDEX) MDG Lite Unicast	100 MB
		FTIS	ID 41 – Warrants & Certificates Italy (SEDEX) MDG Lite Unicast	100 MB
		REFT	ID 40 – Fixed Income Italy (MOT/ExtraMOT)	100 MB
		RD	ID 40 – Fixed Income Italy (MOT/ExtraMOT) MDG Lite Unicast	100 MB
		FTIS	ID 40 – Fixed Income Italy (MOT/ExtraMOT) MDG Lite Unicast	100 MB
		REFT	ID 36 – Equity Derivatives Italy	100 MB
		RD	ID 36 – Equity Derivatives Italy MDG Lite Unicast	100 MB
		FTIS	ID 36 – Equity Derivatives Italy MDG Lite Unicast	100 MB
		REFT	ID 37 – Index Options Italy	100 MB
		RD	ID 37 – Index Options Italy MDG Lite Unicast	100 MB
		FTIS	ID 37 – Index Options Italy MDG Lite Unicast	100 MB

EURONEXT MARKET DATA INFORMATION PRODUCT	MARKET DATA PRODUCT CODE	TYPE OF DATA	OPTIQ MARKET DATA CHANNEL	CHANNEL SPEED		
EURONEXT MILAN ALL MARKETS <i>(available in Level 2, Level 1 and Last Price)</i>	MAMLP-IU MAMLP-OPS	REFT	ID 28 – Index Futures Italy	100 MB		
		RD	ID 28 – Index Futures Italy MDG Lite Unicast	100 MB		
		FTIS	ID 28 – Index Futures Italy MDG Lite Unicast	100 MB		
		REFT	ID 19 – Trading After Hours Italy	100 MB		
		RD	ID 19 – Trading After Hours Italy MDG Lite Unicast	100 MB		
		FTIS	ID 19 – Trading After Hours Italy MDG Lite Unicast	100 MB		
		REFT	ID 45 – Global Equity Market	100 MB		
		RD	ID 45 – Global Equity Market MDG Lite Unicast	100 MB		
		FTIS	ID 45 – Global Equity Market MDG Lite Unicast	100 MB		
EURONEXT MILAN AFF <i>(available in Level 2, Level 1 and Last Price)</i> <i>The Level 2 products also include the Market Data Channels mapped to the Level 1 and Last Price product codes.</i>	MAFFL2-IU MAFFL2-OPS	BBBO	ID 18 – Equities Italy	100 MB	1 GB	
		FBMU	ID 18 – Equities Italy	100 MB	1 GB	
		FBOU	ID 18 – Equities Italy	100 MB	1 GB	10GB
		MBO	ID 18 – Equities Italy MDG Lite Multicast	100 MB		
		MBP	ID 18 – Equities Italy MDG Lite Multicast	100 MB		
		FOBU	ID 18 – Equities Italy MDG Lite Unicast	100 MB		
		BBOU	ID 18 – Equities Italy MDG Lite Unicast	100 MB		
		MPSU	ID 18 – Equities Italy MDG Lite Unicast	100 MB		
		MOSU	ID 18 – Equities Italy MDG Lite Unicast	100 MB		

EURONEXT MARKET DATA INFORMATION PRODUCT	MARKET DATA PRODUCT CODE	TYPE OF DATA	OPTIQ MARKET DATA CHANNEL	CHANNEL SPEED	
EURONEXT MILAN AFF <i>(available in Level 2, Level 1 and Last Price)</i> <i>The Level 2 products also include the Market Data Channels mapped to the Level 1 and Last Price product codes.</i>	MAFFL2-IU MAFFL2-OPS	BBBO	ID 39 – Funds ETF Italy	100 MB	1 GB
		FBMU	ID 39 – Funds ETF Italy	100 MB	1 GB
		FBOU	ID 39 – Funds ETF Italy	1 GB	10 GB
		MBO	ID 39 – Funds ETF Italy MDG Lite Multicast	100 MB	
		MBP	ID 39 – Funds ETF Italy MDG Lite Multicast	100 MB	
		FOBU	ID 39 – Funds ETF Italy MDG Lite Unicast	100 MB	
		BBOU	ID 39 – Funds ETF Italy MDG Lite Unicast	100 MB	
		MPSU	ID 39 – Funds ETF Italy MDG Lite Unicast	100 MB	
		MOSU	ID 39 – Funds ETF Italy MDG Lite Unicast	100 MB	
		BBBO	ID 41 – Warrants & Certificates Italy (SEDEX)	100 MB	
		BBBO	ID 41 – Warrants & Certificates Italy (SEDEX)	1 GB	
		FBMU	ID 41 – Warrants & Certificates Italy (SEDEX)	1 GB	
		MBP	ID 41 – Warrants & Certificates Italy (SEDEX) MDG Lite Multicast	100 MB	
		BBOU	ID 41 – Warrants & Certificates Italy (SEDEX) MDG Lite Unicast	100 MB	
		MPSU	ID 41 – Warrants & Certificates Italy (SEDEX) MDG Lite Unicast	100 MB	

EURONEXT MARKET DATA INFORMATION PRODUCT	MARKET DATA PRODUCT CODE	TYPE OF DATA	OPTIQ MARKET DATA CHANNEL	CHANNEL SPEED	
<p>EURONEXT MILAN AFF</p> <p><i>(available in Level 2, Level 1 and Last Price)</i></p> <p><i>The Level 1 products also include the Market Data Channels mapped to the Last Price product codes.</i></p>	MAFFL1-IU MAFFL1-OPS	BBBO	ID 18 – Equities Italy	100 MB	1 GB
		BBOU	ID 18 – Equities Italy MDG Lite Unicast	100 MB	
		BBBO	ID 39 – Funds ETF Italy	100 MB	1 GB
		BBOU	ID 39 – Funds ETF Italy MDG Lite Unicast	100 MB	
		BBBO	ID 41 – Warrants & Certificates Italy (SEDEX)	1 GB	
		BBOU	ID 41 – Warrants & Certificates Italy (SEDEX) MDG Lite Unicast	100 MB	
	MAFFLP-IU MAFFLP-OPS	REFT	ID 18 – Equities Italy	100 MB	
		RD	ID 18 – Equities Italy MDG Lite Unicast	100 MB	
		FTIS	ID 18 – Equities Italy MDG Lite Unicast	100 MB	
		REFT	ID 39 – Funds ETF Italy	100 MB	
		RD	ID 39 – Funds ETF Italy MDG Lite Unicast	100 MB	
		FTIS	ID 39 – Funds ETF Italy MDG Lite Unicast	100 MB	
		REFT	ID 41 – Warrants & Certificates Italy (SEDEX)	100 MB	
		RD	ID 41 – Warrants & Certificates Italy (SEDEX) MDG Lite Unicast	100 MB	
		FTIS	ID 41 – Warrants & Certificates Italy (SEDEX) MDG Lite Unicast	100 MB	

EURONEXT MARKET DATA INFORMATION PRODUCT	MARKET DATA PRODUCT CODE	TYPE OF DATA	OPTIQ MARKET DATA CHANNEL	CHANNEL SPEED	
<p>EURONEXT MILAN MOT</p> <p><i>(available in Level 2, Level 1 and Last Price)</i></p> <p><i>The Level 2 products also include the Market Data Channels mapped to the Level 1 and Last Price product codes.</i></p> <p><i>The Level 1 products also include the Market Data Channels mapped to the Last Price product codes.</i></p>	MMOTL2-IU MMOTL2-OPS	BBBO	ID 40 – Fixed Income Italy (MOT/ExtraMOT)	100 MB	1 GB
		FBMU	ID 40 – Fixed Income Italy (MOT/ExtraMOT)	100 MB	1 GB
		FBOU	ID 40 – Fixed Income Italy (MOT/ExtraMOT)	100 MB	1 GB
		MBO	ID 40 – Fixed Income Italy (MOT/ExtraMOT) MDG Lite Multicast	100 MB	
		MBP	ID 40 – Fixed Income Italy (MOT/ExtraMOT) MDG Lite Multicast	100 MB	
		FOBU	ID 40 – Fixed Income Italy (MOT/ExtraMOT) MDG Lite Unicast	100 MB	
		BBOU	ID 40 – Fixed Income Italy (MOT/ExtraMOT) MDG Lite Unicast	100 MB	
		MPSU	ID 40 – Fixed Income Italy (MOT/ExtraMOT) MDG Lite Unicast	100 MB	
		MOSU	ID 40 – Fixed Income Italy (MOT/ExtraMOT) MDG Lite Unicast	100 MB	
	MMOTL1-IU	BBBO	ID 40 – Fixed Income Italy (MOT/ExtraMOT)	100 MB	1 GB
	MMOTL1-OPS	BBOU	ID 40 – Fixed Income Italy (MOT/ExtraMOT) MDG Lite Unicast	100 MB	
	MMOTLP-IU	REFT	ID 40 – Fixed Income Italy (MOT/ExtraMOT)	100 MB	
	MMOTLP-OPS	RD	ID 40 – Fixed Income Italy (MOT/ExtraMOT) MDG Lite Unicast	100 MB	
		FTIS	ID 40 – Fixed Income Italy (MOT/ExtraMOT) MDG Lite Unicast	100 MB	

EURONEXT MARKET DATA INFORMATION PRODUCT	MARKET DATA PRODUCT CODE	TYPE OF DATA	OPTIQ MARKET DATA CHANNEL	CHANNEL SPEED	
<p>EURONEXT MILAN DER <i>(available in Level 2, Level 1 and Last Price)</i></p> <p><i>The Level 2 products also include the Market Data Channels mapped to the Level 1 and Last Price product codes.</i></p>	<p>MDERL2-IU</p> <p>MDERL2-OPS</p>	BBBO	ID 36 – Equity Derivatives Italy	100 MB	1 GB
		FBMU	ID 36 – Equity Derivatives Italy	1 GB	
		FOBU	ID 36 – Equity Derivatives Italy MDG Lite Unicast	100 MB	
		MBP	ID 36 – Equity Derivatives Italy MDG Lite Multicast	100 MB	
		BBOU	ID 36 – Equity Derivatives Italy MDG Lite Unicast	100 MB	
		MPSU	ID 36 – Equity Derivatives Italy MDG Lite Unicast	100 MB	
		BBBO	ID 37 – Index Options Italy	100 MB	1GB
		FBMU	ID 37 – Index Options Italy	1 GB	10 GB
		MBP	ID 37 – Index Options Italy MDG Lite Multicast	100 MB	
		FOBU	ID 37 – Index Options Italy MDG Lite Unicast	100 MB	
		BBOU	ID 37 – Index Options Italy MDG Lite Unicast	100 MB	
		MPSU	ID 37 – Index Options Italy MDG Lite Unicast	100 MB	
		BBBO	ID 28 – Index Futures Italy	100 MB	1 GB
		FBMU	ID 28 – Index Futures Italy	1 GB	10 GB
		MBP	ID 28 – Index Futures Italy MDG Lite Multicast	100 MB	
		FOBU	ID 28 – Index Futures Italy MDG Lite Unicast	100 MB	
		BBOU	ID 28 – Index Futures Italy MDG Lite Unicast	100 MB	
		MPSU	ID 28 – Index Futures Italy MDG Lite Unicast	100 MB	

EURONEXT MARKET DATA INFORMATION PRODUCT	MARKET DATA PRODUCT CODE	TYPE OF DATA	OPTIQ MARKET DATA CHANNEL	CHANNEL SPEED	
<p>EURONEXT MILAN DER</p> <p><i>(available in Level 2, Level 1 and Last Price)</i></p> <p><i>The Level 1 products also include the Market Data Channels mapped to the Last Price product codes.</i></p>	<p>MDERL1-IU</p> <p>MDERL1-OPS</p>	BBBO	ID 36 – Equity Derivatives Italy	100 MB	1 GB
		BBOU	ID 36 – Equity Derivatives Italy MDG Lite Unicast	100 MB	
		BBBO	ID 37 – Index Options Italy	100 MB	1GB
		BBOU	ID 37 – Index Options Italy MDG Lite Unicast	100 MB	
		BBBO	ID 28 – Index Futures Italy	100 MB	1 GB
		BBOU	ID 28 – Index Futures Italy MDG Lite Unicast	100 MB	
	<p>MDERLP-IU</p> <p>MDERLP-OPS</p>	REFT	ID 36 – Equity Derivatives Italy	100 MB	
		RD	ID 36 – Equity Derivatives Italy MDG Lite Unicast	100 MB	
		FTIS	ID 36 – Equity Derivatives Italy MDG Lite Unicast	100 MB	
		REFT	ID 37 – Index Options Italy	100 MB	
		RD	ID 37 – Index Options Italy MDG Lite Unicast	100 MB	
		FTIS	ID 37 – Index Options Italy MDG Lite Unicast	100 MB	
		REFT	ID 28 – Index Futures Italy	100 MB	
		RD	ID 28 – Index Futures Italy MDG Lite Unicast	100 MB	
		FTIS	ID 28 – Index Futures Italy MDG Lite Unicast	100 MB	

EURONEXT MARKET DATA INFORMATION PRODUCT	MARKET DATA PRODUCT CODE	TYPE OF DATA	OPTIQ MARKET DATA CHANNEL	CHANNEL SPEED	
<p>TRADING AFTER HOURS MARKET (available in Level 2, Level 1 and Last Price)</p> <p>The Level 2 products also include the Market Data Channels mapped to the Level 1 and Last Price product codes.</p> <p>The Level 1 products also include the Market Data Channels mapped to the Last Price product codes.</p>	TAHL2-IU TAHL2-OPS	BBBO	ID 19 – Trading After Hours Italy	100 MB	1 GB
		FBMU	ID 19 – Trading After Hours Italy	100 MB	1 GB
		FBOU	ID 19 – Trading After Hours Italy	100 MB	1 GB
		MBO	ID 19 – Trading After Hours Italy MDG Lite Multicast	100 MB	
		MBP	ID 19 – Trading After Hours Italy MDG Lite Multicast	100 MB	
		FOBU	ID 19 – Trading After Hours Italy MDG Lite Unicast	100 MB	
		BBOU	ID 19 – Trading After Hours Italy MDG Lite Unicast	100 MB	
		MPSU	ID 19 – Trading After Hours Italy MDG Lite Unicast	100 MB	
		MOSU	ID 19 – Trading After Hours Italy MDG Lite Unicast	100 MB	
	TAHL1-IU	BBBO	ID 19 – Trading After Hours Italy	100 MB	1 GB
	TAHL1-OPS	BBOU	ID 19 – Trading After Hours Italy MDG Lite Unicast	100 MB	
	TAHLP-IU	REFT	ID 19 – Trading After Hours Italy	100 MB	
	TAHLP-OPS	RD	ID 19 – Trading After Hours Italy MDG Lite Unicast	100 MB	
	TAHLP-OPS	FTIS	ID 19 – Trading After Hours Italy MDG Lite Unicast	100 MB	

EURONEXT MARKET DATA INFORMATION PRODUCT	MARKET DATA PRODUCT CODE	TYPE OF DATA	OPTIQ MARKET DATA CHANNEL	CHANNEL SPEED		
<p>GLOBAL EQUITY MARKET (available in Level 2, Level 1 and Last Price)</p> <p>The Level 2 products also include the Market Data Channels mapped to the Level 1 and Last Price product codes.</p> <p>The Level 1 products also include the Market Data Channels mapped to the Last Price product codes).</p>	GEML2-IU	BBBO	ID 45 – Global Equity Market	100 MB	1 GB	
		FBMU	ID 45 – Global Equity Market	100 MB	1 GB	
		FBOU	ID 45 – Global Equity Market	100 MB	1 GB	
		MBO	ID 45 – Global Equity Market MDG Lite Multicast	100 MB		
		MBP	ID 45 – Global Equity Market MDG Lite Multicast	100 MB		
		GEML2-OPS	FOBU	ID 45 – Global Equity Market MDG Lite Unicast	100 MB	
			BBOU	ID 45 – Global Equity Market MDG Lite Unicast	100 MB	
			MPSU	ID 45 – Global Equity Market MDG Lite Unicast	100 MB	
			MOSU	ID 45 – Global Equity Market MDG Lite Unicast	100 MB	
	GEML1-IU		BBBO	ID 45 – Global Equity Market	100 MB	1 GB
	GEML1-OPS	BBOU	ID 45 – Global Equity Market MDG Lite Unicast	100 MB		
	GEMLP-IU	REFT	ID 45 – Global Equity Market	100 MB		
		RD	ID 45 – Global Equity Market MDG Lite Unicast	100 MB		
		GEMLP-OPS	FTIS	ID 45 – Global Equity Market MDG Lite Unicast	100 MB	

EURONEXT MARKET DATA INFORMATION PRODUCT	MARKET DATA PRODUCT CODE	TYPE OF DATA	OPTIQ MARKET DATA CHANNEL	CHANNEL SPEED	
<p>EUROTLX ALL MARKETS (available in Level 2, Level 1 and Last Price)</p> <p>The Level 2 products also include the Market Data Channels mapped to the Last Price product codes.</p>	TLXAL2-IU	BBBO	ID 42 – Fixed Income ETLX (Bond-X)	100 MB	1 GB
		FBMU	ID 42 – Fixed Income ETLX (Bond-X)	100 MB	1GB
		FBOU	ID 42 – Fixed Income ETLX (Bond-X)	100 MB	1 GB
		MBO	ID 42 – Fixed Income ETLX (Bond-X) MDG Lite Multicast	100 MB	
		MBP	ID 42 – Fixed Income ETLX (Bond-X) MDG Lite Multicast	100 MB	
		FOBU	ID 42 – Fixed Income ETLX (Bond-X) MDG Lite Unicast	100 MB	
		BBOU	ID 42 – Fixed Income ETLX (Bond-X) MDG Lite Unicast	100 MB	
		MPSU	ID 42 – Fixed Income ETLX (Bond-X) MDG Lite Unicast	100 MB	
		MOSU	ID 42 – Fixed Income ETLX (Bond-X) MDG Lite Unicast	100 MB	
		TLXAL2-OPS	BBBO	ID 44 – Equities EuroTLX	100 MB
	FBMU		ID 44 – Equities EuroTLX	100 MB	1GB
	FBOU		ID 44 – Equities EuroTLX	100 MB	1 GB
	BBOU		ID 44 – Equities EuroTLX MDG Lite Multicast	100 MB	
	MPSU		ID 44 – Equities EuroTLX MDG Lite Multicast	100 MB	
	FOBU		ID 44 – Equities EuroTLX MDG Lite Unicast	100 MB	
	BBOU		ID 44 – Equities EuroTLX MDG Lite Unicast	100 MB	
	MPSU		ID 44 – Equities EuroTLX MDG Lite Unicast	100 MB	
	MOSU		ID 44 – Equities EuroTLX MDG Lite Unicast	100 MB	
	MOSU		ID 44 – Equities EuroTLX MDG Lite Unicast	100 MB	

EURONEXT MARKET DATA INFORMATION PRODUCT	MARKET DATA PRODUCT CODE	TYPE OF DATA	OPTIQ MARKET DATA CHANNEL	CHANNEL SPEED	
<p>EUROTLX ALL MARKETS</p> <p><i>(available in Level 2, Level 1 and Last Price)</i></p> <p><i>The Level 2 products also include the Market Data Channels mapped to the Last Price product codes.</i></p> <p><i>The Level 1 products also include the Market Data Channels mapped to the Last Price product codes.</i></p>	TLXAL2-IU TLXAL2-OPS	BBBO	ID 43 – Warrants & Certificates ETLX (Cert-X)	100 MB	1 GB
		FBMU	ID 43 – Warrants & Certificates ETLX (Cert-X)	100 MB	1 GB
		MBP	ID 43 – Warrants & Certificates ETLX (Cert-X) MDG Lite Multicast	100 MB	
		FOBU	ID 43 – Warrants & Certificates ETLX (Cert-X) MDG Lite Unicast	100 MB	
		BBOU	ID 43 – Warrants & Certificates ETLX (Cert-X) MDG Lite Unicast	100 MB	
		MPSU	ID 43 – Warrants & Certificates ETLX (Cert-X) MDG Lite Unicast	100 MB	
	TLXAL1-IU TLXAL1-OPS	BBBO	ID 42 – Fixed Income ETLX (Bond-X)	100 MB	1 GB
		BBOU	ID 42 – Fixed Income ETLX (Bond-X) MDG Lite Unicast	100 MB	
		BBBO	ID 44 – Equities EuroTLX	100 MB	1 GB
		BBOU	ID 44 – Equities EuroTLX MDG Lite Multicast	100 MB	
		BBOU	ID 44 – Equities EuroTLX MDG Lite Unicast	100 MB	
		BBBO	ID 43 – Warrants & Certificates ETLX (Cert-X)	100 MB	1 GB
	TLXALP-IU TLXALP-OPS	REFT	ID 42 – Fixed Income ETLX (Bond-X)	100 MB	
		RD	ID 42 – Fixed Income ETLX (Bond-X) MDG Lite Unicast	100 MB	
		FTIS	ID 42 – Fixed Income ETLX (Bond-X) MDG Lite Unicast	100 MB	
		REFT	ID 44 – Equities EuroTLX	100 MB	
		RD	ID 44 – Equities EuroTLX MDG Lite Unicast	100 MB	

EURONEXT MARKET DATA INFORMATION PRODUCT	MARKET DATA PRODUCT CODE	TYPE OF DATA	OPTIQ MARKET DATA CHANNEL	CHANNEL SPEED	
EUROTLX ALL MARKETS <i>(available in Level 2, Level 1 and Last Price)</i>	TLXALP-IU	FTIS	ID 44 – Equities EuroTLX MDG Lite Unicast	100 MB	
		REFT	ID 43 – Warrants & Certificates ETLX (Cert-X)	100 MB	
	TLXALP-OPS	RD	ID 43 – Warrants & Certificates ETLX (Cert-X) MDG Lite Unicast	100 MB	
		FTIS	ID 43 – Warrants & Certificates ETLX (Cert-X) MDG Lite Unicast	100 MB	
EUROTLX SHARES AND DRs <i>(available in Level 2, Level 1 and Last Price)</i> <i>The Level 2 products also include the Market Data Channels mapped to the Last Price product codes.</i> <i>The Level 1 products also include the Market Data Channels mapped to the Last Price product codes).</i>	TLXEL2-IU TLXEL2-OPS	BBBO	ID 44 – Equities EuroTLX	100 MB	1 GB
		FBMU	ID 44 – Equities EuroTLX	100 MB	1 GB
		FBOU	ID 44 – Equities EuroTLX	100 MB	1 GB
		BBOU	ID 44 – Equities EuroTLX MDG Lite Multicast	100 MB	
		MPSU	ID 44 – Equities EuroTLX MDG Lite Multicast	100 MB	
		FOBU	ID 44 – Equities EuroTLX MDG Lite Unicast	100 MB	
		BBOU	ID 44 – Equities EuroTLX MDG Lite Unicast	100 MB	
		MPSU	ID 44 – Equities EuroTLX MDG Lite Unicast	100 MB	
		MOSU	ID 44 – Equities EuroTLX MDG Lite Unicast	100 MB	
	TLXEL1-IU TLXEL1-OPS	BBBO	ID 44 – Equities EuroTLX	100 MB	1 GB
		BBOU	ID 44 – Equities EuroTLX MDG Lite Multicast	100 MB	
		BBOU	ID 44 – Equities EuroTLX MDG Lite Unicast	100 MB	

EURONEXT MARKET DATA INFORMATION PRODUCT	MARKET DATA PRODUCT CODE	TYPE OF DATA	OPTIQ MARKET DATA CHANNEL	CHANNEL SPEED	
EUROTLX SHARES AND DRs <i>(available in Level 2, Level 1 and Last Price)</i>	TLXELP-IU	REFT	ID 44 – Equities EuroTLX	100 MB	
	TLXELP-OPS	RD	ID 44 – Equities EuroTLX MDG Lite Unicast	100 MB	
		FTIS	ID 44 – Equities EuroTLX MDG Lite Unicast	100 MB	
EUROTLX BONDS <i>(available in Level 2, Level 1 and Last Price)The Level 2 products also include the Market Data Channels mapped to the Last Price product codes.</i> <i>The Level 1 products also include the Market Data Channels mapped to the Last Price product codes).</i>	TLXBL2-IU TLXBL2-OPS	BBBO	ID 42 – Fixed Income ETLX (Bond-X)	100 MB	1 GB
		FBMU	ID 42 – Fixed Income ETLX (Bond-X)	100 MB	1 GB
		FBOU	ID 42 – Fixed Income ETLX (Bond-X)	100 MB	1 GB
		MBO	ID 42 – Fixed Income ETLX (Bond-X) MDG Lite Multicast	100 MB	
		MBP	ID 42 – Fixed Income ETLX (Bond-X) MDG Lite Multicast	100 MB	
	TLXBL1-IU TLXBL1-OPS	BBBO	ID 42 – Fixed Income ETLX (Bond-X)	100 MB	1 GB
	TLXBLP-IU TLXBLP-OPS	REFT	ID 42 – Fixed Income ETLX (Bond-X)	100 MB	
		RD	ID 42 – Fixed Income ETLX (Bond-X) MDG Lite Unicast	100 MB	
		FTIS	ID 42 – Fixed Income ETLX (Bond-X) MDG Lite Unicast	100 MB	

EURONEXT MARKET DATA INFORMATION PRODUCT	MARKET DATA PRODUCT CODE	TYPE OF DATA	OPTIQ MARKET DATA CHANNEL	CHANNEL SPEED	
<p>EUROTLX CERTIFICATES</p> <p><i>(available in Level 2, Level 1 and Last Price)</i></p> <p><i>The Level 2 products also include the Market Data Channels mapped to the Last Price product codes.</i></p> <p><i>The Level 1 products also include the Market Data Channels mapped to the Last Price product codes.</i></p>	TLXCL2-IU TLXCL2-OPS	BBBO	ID 43 – Warrants & Certificates ETLX (Cert-X)	100 MB	1 GB
		FBMU	ID 43 – Warrants & Certificates ETLX (Cert-X)	1 GB	
		MBP	ID 43 – Warrants & Certificates ETLX (Cert-X) MDG Lite Multicast	100 MB	
		BBOU	ID 43 – Warrants & Certificates ETLX (Cert-X) MDG Lite Unicast	100 MB	
		MPSU	ID 43 – Warrants & Certificates ETLX (Cert-X) MDG Lite Unicast	100 MB	
	TLXCL1-IU	BBBO	ID 43 – Warrants & Certificates ETLX (Cert-X)	100 MB	1 GB
	TLXCL1-OPS	BBOU	ID 43 – Warrants & Certificates ETLX (Cert-X) MDG Lite Unicast	100 MB	
	TLXCLP-IU	REFT	ID 43 – Warrants & Certificates ETLX (Cert-X)	100 MB	
	TLXCLP-OPS	RD	ID 43 – Warrants & Certificates ETLX (Cert-X) MDG Lite Unicast	100 MB	
		FTIS	ID 43 – Warrants & Certificates ETLX(Cert-X) MDG Lite Unicast	100 MB	

APPENDIX 5: ADDITIONAL EXPLANATION REGARDING THE EMDA REPORTING POLICY

Reporting your Internal Use of Information

Clause 4.2: When you are a member receiving real time data from Direct Access and/or an ASP/ESP service, you will need to report your internal use (including for trading activities) **directly** to Euronext using -IU product codes.

If you are **not approved** to report Natural User, real time data received from a redistributor will need to be reported to the redistributor.

If you are **approved** to report Natural User, real time data received from a redistributor will need to be reported **directly** to Euronext using -NU product codes.

Reporting Subscribers Approved to report Natural User

If the subscribers are approved to report Natural user, then you (the redistributor) as Information Supplier of the Information, should report the provision of these subscribers via the -SDB or -DDB product codes. These -SDB and -DDB product codes are non-billable, 0 (zero) Euro, so the subscribers will not be billed twice.